



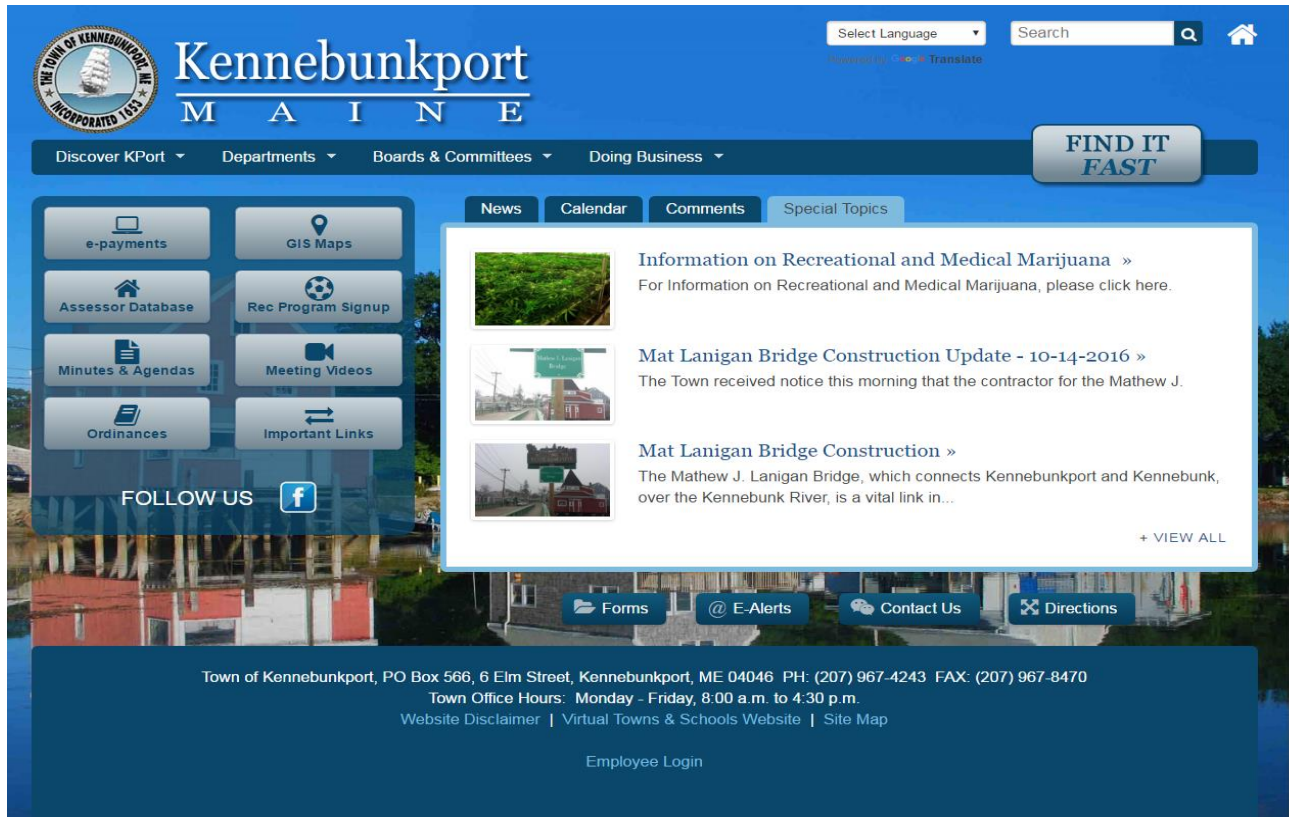
Kennebunkport, Maine

Welcome to Kennebunkport

NEED HELP WITH THE GIS MAPS PAGE?

No Problem! Sometimes technology can be a bit daunting but hopefully this will provide you with some guidance on doing simple property queries.

Lets start with the Town of
Kennebunkport's website:
www.kennebunkportme.gov



The screenshot shows the official website of the Town of Kennebunkport. The header features the town's seal on the left, the name "Kennebunkport" in a large serif font with "M A I N E" underneath, and a navigation bar with links for "Discover KPort", "Departments", "Boards & Committees", and "Doing Business". A "FIND IT FAST" button is also present. Below the header, there are several service buttons: "e-payments", "GIS Maps", "Assessor Database", "Rec Program Signup", "Minutes & Agendas", "Meeting Videos", "Ordinances", and "Important Links". A "FOLLOW US" section with a Facebook icon is also visible. The main content area displays three news items, each with a small image and a title: "Information on Recreational and Medical Marijuana", "Mat Lanigan Bridge Construction Update - 10-14-2016", and "Mat Lanigan Bridge Construction". At the bottom, there are buttons for "Forms", "@ E-Alerts", "Contact Us", and "Directions". The footer contains contact information for the Town of Kennebunkport, including the address, phone, fax, and office hours, as well as links for "Website Disclaimer", "Virtual Towns & Schools Website", "Site Map", and "Employee Login".

Kennebunkport
M A I N E

Discover KPort ▾ Departments ▾ Boards & Committees ▾ Doing Business ▾

FIND IT FAST

[e-payments](#) [GIS Maps](#) [Assessor Database](#) [Rec Program Signup](#) [Minutes & Agendas](#) [Meeting Videos](#) [Ordinances](#) [Important Links](#)

FOLLOW US [Facebook](#)

News **Calendar** **Comments** **Special Topics**

Information on Recreational and Medical Marijuana »
For Information on Recreational and Medical Marijuana, please click here.

Mat Lanigan Bridge Construction Update - 10-14-2016 »
The Town received notice this morning that the contractor for the Mathew J.

Mat Lanigan Bridge Construction »
The Mathew J. Lanigan Bridge, which connects Kennebunkport and Kennebunk, over the Kennebunk River, is a vital link in...

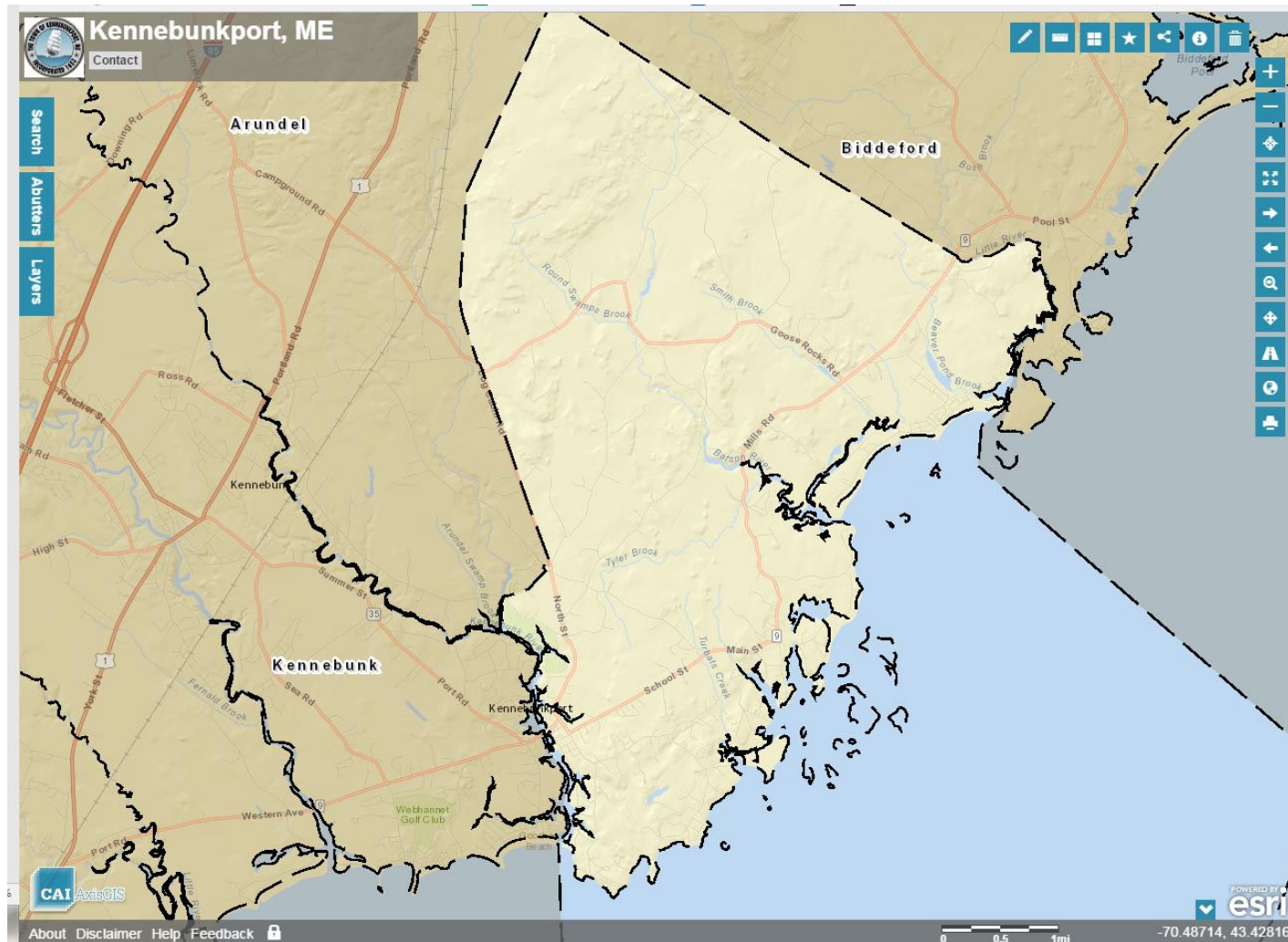
[+ VIEW ALL](#)

[Forms](#) [@ E-Alerts](#) [Contact Us](#) [Directions](#)

Town of Kennebunkport, PO Box 566, 6 Elm Street, Kennebunkport, ME 04046 PH: (207) 967-4243 FAX: (207) 967-8470
Town Office Hours: Monday - Friday, 8:00 a.m. to 4:30 p.m.
[Website Disclaimer](#) | [Virtual Towns & Schools Website](#) | [Site Map](#)

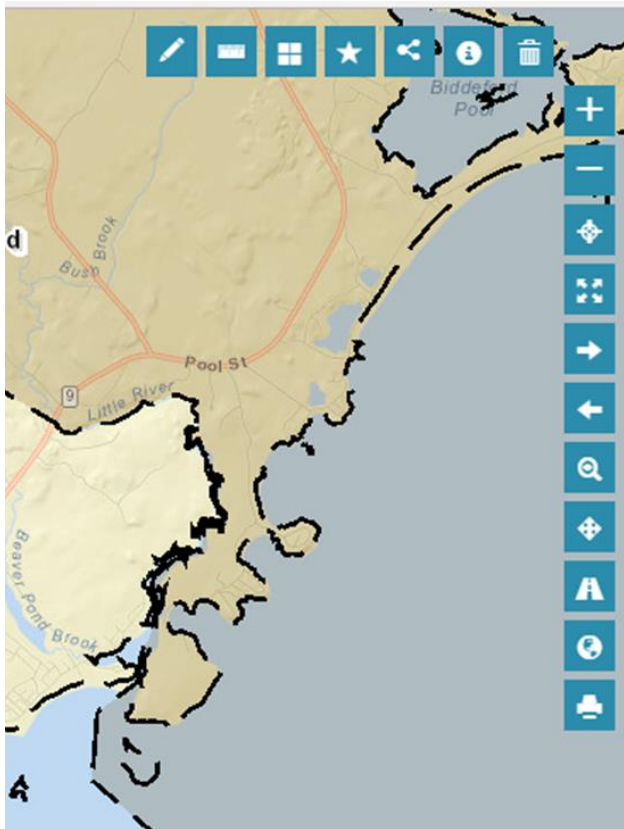
[Employee Login](#)

Click on the light blue box labeled GIS Maps. This will take you to a page that looks like this:

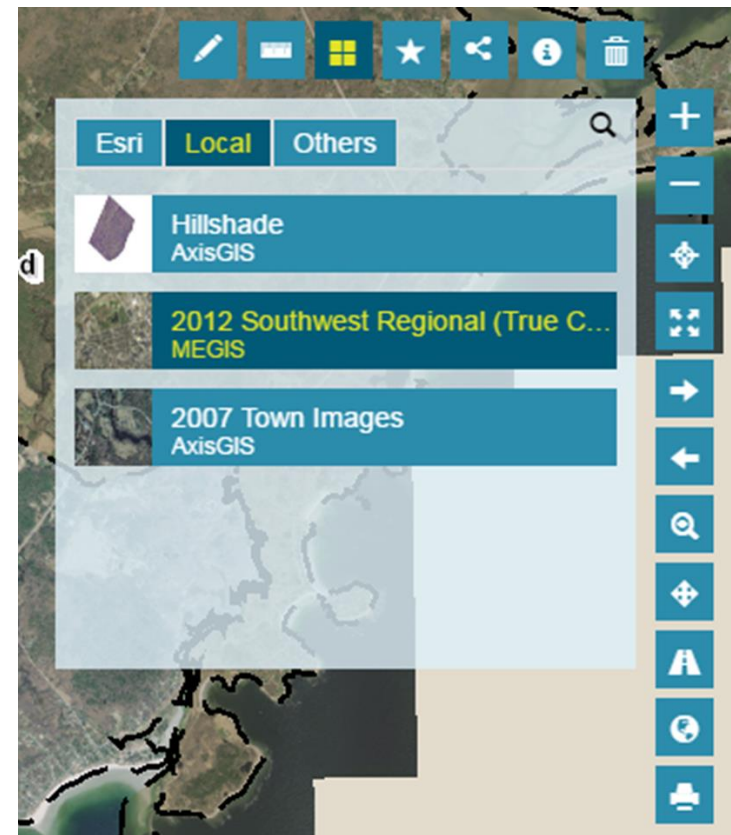


Base Map Selection

In the upper right hand corner of the screen you will see a number of icons. Typically used ones are the grouping of 4 small boxes which give you choices for base maps, the draw graphics tool, and the print icon.



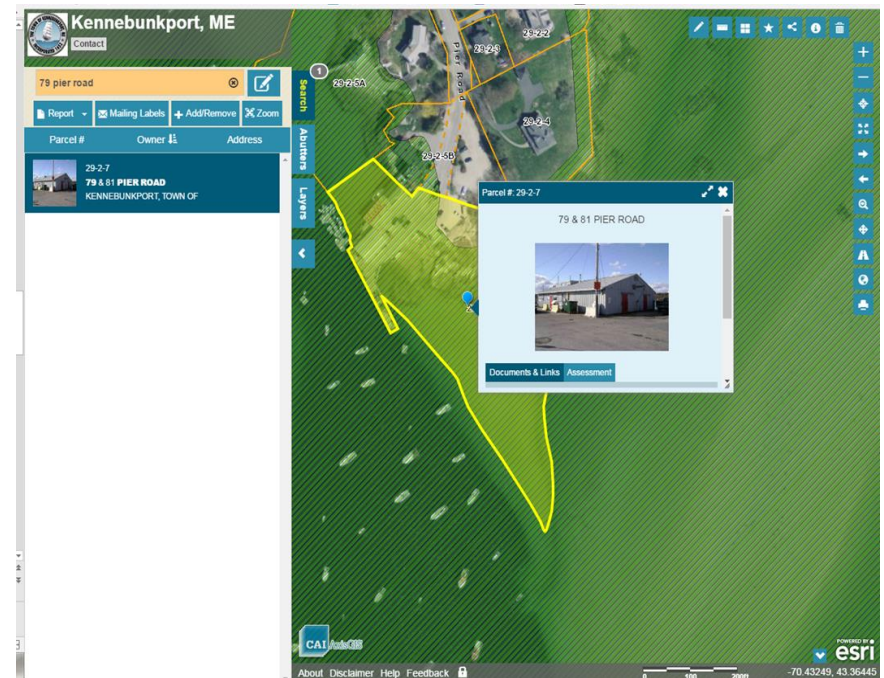
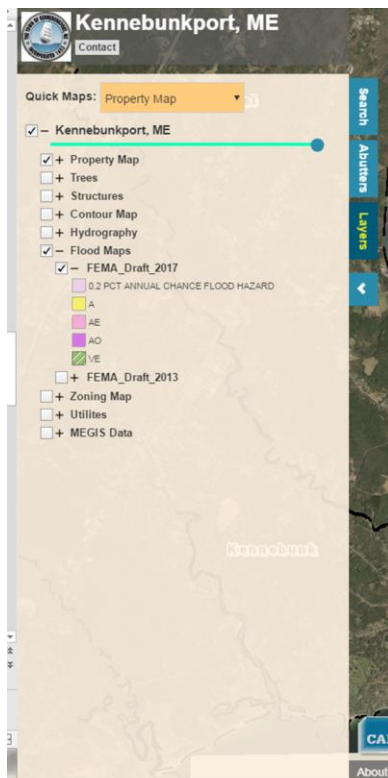
Selecting the base maps option will bring up these choices. Choose the base map group titled local and then select 2012. Once you've selected the base map close the change base map window by clicking on the grouping of the 4 small boxes.



Legend and Property Selection

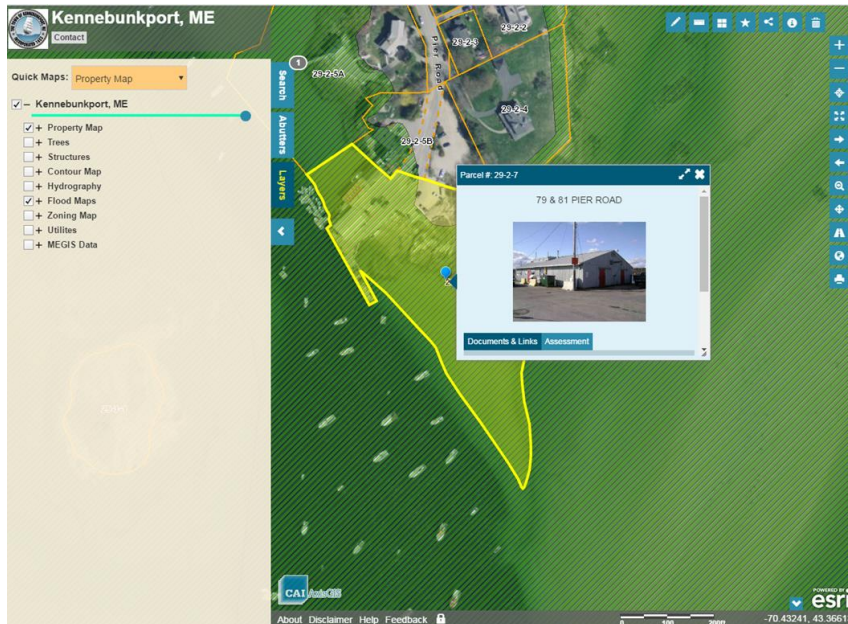
On the left hand side of the screen you will see a number of choices: Search, Abutters, and Layers. There are many pieces of information available in the layers selection. For this exercise lets select the box titled Flood maps. The 2017 Layer is the default selection. Selecting the plus (+) icon will open up further drop down selections showing the legend for the different flood zones.

Let's select a property, Properties can be chosen by a number of different ways, location, property owner, map, block and lot, to name a few. Keep in mind the more general the search parameter the more results will be displayed. For instance typing in Wildes District Road will result in the display of every parcel that has Wildes District Road as part of its description. Lets look at the Cape Porpoise Pier. Select the blue Search tab Type in : 79 Pier Road and hit Enter



Property Selection

Once you've selected the property you'll see quite a bit! With the flood layer selected it will obscure the base layer beneath. Either turn the layer off on the legend tab, or use the green sidebar with the solid blue circle to adjust the transparency.



To see specific information regarding the associated flood zone look at the pop-up box in the center of the screen that shows a picture of the primary building on the property. In the blue header up top select the arrow that points to the right. That will bring up a list of detailed information related to the flood zone, including elevations.



More Information

There you go! You've found out information regarding how the Preliminary Flood maps will affect the Cape Porpoise Pier. There is quite a bit more information and search options available here, but hopefully this brief tutorial has helped you begin to navigate all the information we have available on the Kennebunkport GIS Maps Site. If you have questions navigating this site please feel free to e-mail or call Werner Gilliam or Wayne Mathews at : wgilliam@kennebunkportme.gov

wmathews@kennebunkportme.gov

967-1604

967-1602