

**Town of Kennebunkport
Board of Selectmen's Meeting
Village Fire Station-32 North Street
July 10, 2014 – 7 PM**

Minutes of the Selectmen Meeting of July 10, 2014

Selectmen present: Stuart E. Barwise, Patrick A. Briggs, Allen A. Daggett, and Sheila Matthews-Bull

Selectman absent: Edward W. Hutchins

Others present: Judy Barrett, Michael Claus, Bob Gerber, Werner Gilliam, David James, Leila Pike, Chris Perry, David Powell, Bob Sherman, Laurie Smith, Arlene McMurray and others

1. Call to Order.

Chair Daggett called the meeting to order at 7:01 PM.

2. Approve the April 3, 10, June 12, 14, 17, and 26, 2014, selectmen meeting minutes and reapprove the March 20, 2014 minutes.

Motion by Selectmen Barwise, seconded by Selectman Matthews-Bull to approve the April 3, 2014, selectmen meeting minutes. **Vote:** 4-0.

Motion by Selectman Barwise, seconded by Selectman Matthews-Bull, to approve the April 10, 2014, selectmen meeting minutes. **Vote:** 4-0.

Motion by Selectman Barwise, seconded by Selectman Matthews-Bull, to approve the June 12, 2014, selectmen meeting minutes. **Vote:** 4-0.

Motion by Selectman Barwise, seconded by Selectman Matthews-Bull, to approve the June 14, 2014, selectmen meeting minutes. **Vote:** 4-0.

Motion by Selectman Barwise, seconded by Selectman Matthews-Bull, to approve the June 17, 2014, selectmen meeting minutes. **Vote:** 4-0.

Motion by Selectman Barwise, seconded by Selectman Matthews-Bull, to approve the June 26, 2014, selectmen meeting minutes. **Vote:** 4-0.

Motion by Selectman Barwise, seconded by Selectman Matthews-Bull, to reapprove the March 20, 2014, selectmen meeting minutes. **Vote:** 3-0-1. Selectman Barwise abstained because he was not present at that meeting.

3. Public Forum (This is an opportunity for anyone who wants to address the Board of Selectmen with any issue that is not on the agenda.).

There were no comments.

4. **Public Hearing to consider a victualer's license for the Cake House Bakery and Coffee Shop, 5 Union Street, from July 10, 2014, through May 31, 2015.**

Chair Daggett opened the public hearing at 7:03 PM. Hearing no comments, he closed the public hearing at 7:03 PM.

Motion by Selectman Barwise, seconded by Selectman Matthews-Bull, to approve the victualer's license for the Cake House Bakery and Coffee Shop, 5 Union Street, from July 10, 2014, through May 31, 2015. **Vote:** 4-0.

5. **Public Hearing to consider a victualer's license for Wicked Tails, 4 Spring Street for July 10, 2014, through May 31, 2015.**

Chair Daggett opened the public hearing at 7:04 PM. Hearing no comments, he closed the public hearing at 7:04 PM.

Motion by Selectman Barwise, seconded by Selectman Matthews-Bull, to approve the victualer's license for Wicked Tails, 4 Spring Street for July 10, 2014, through May 31, 2015. **Vote:** 4-0.

6. **Consider a renewal liquor license application submitted by Beverly Davis and Richard Litchfield, DBA The Captain Lord Mansion, Inc., 6 Pleasant St.**

Selectman Matthews-Bull commented that all of these applications have been inspected and approved by the fire chief, police chief, and code enforcement officer.

Motion by Selectman Barwise, seconded by Selectman Matthews-Bull, to approve the renewal liquor license application submitted by Beverly Davis and Richard Litchfield, DBA The Captain Lord Mansion, Inc., 6 Pleasant St. **Vote:** 4-0.

7. **Consider a renewal liquor license application submitted by US Hotels New England LLC, and US Hotels New England Management Corp, DBA The Breakwater Inn, 131-133 Ocean Ave.**

Motion by Selectman Barwise, seconded by Selectman Matthews-Bull, to approve the renewal liquor license application submitted by US Hotels New England LLC, and US Hotels New England Management Corp, DBA The Breakwater Inn, 131-133 Ocean Ave. **Vote:** 4-0.

8. **Consider a renewal special amusement permit application submitted by US Hotels New England LLC, DBA The Breakwater Inn, 127 Ocean Ave.**

Motion by Selectman Barwise, seconded by Selectman Matthews-Bull, to ap-

prove the renewal special amusement permit application submitted by US Hotels New England LLC, DBA The Breakwater Inn, 127 Ocean Ave **Vote: 4-0.**

9. Public Hearing to adopt the MMA Model General Assistance Ordinance Appendix A for the period of July 1, 2014-June 30, 2015.

Chair Daggett opened the public hearing at 7:05 PM

General Assistance Administrator Judy Barrett explained the General Assistance funding.

Chair Daggett closed the public hearing at 7:09 PM.

Motion by Selectman Barwise, seconded by Selectman Matthews-Bull, to adopt the MMA Model General Assistance Ordinance Appendix A for the period of July 1, 2014-June 30, 2015. **Vote: 4-0.**

10. Accept an anonymous donation to the Kennebunkport emergency fuel/food account in the amount of \$1000.

Town Manager Laurie Smith mentioned that this donation was to go toward nursing fees.

Motion by Selectman Barwise, seconded by Selectman Matthews-Bull, to accept the anonymous \$1,000 donation to the Kennebunkport Public Health Department for nursing fees. **Vote: 4-0.**

11. Robert Gerber of Ransom Environmental to discuss potential study of FEMA map of Goose Rocks Beach.

Bob Gerber and his assistant Leila Pike gave a Powerpoint presentation of the FEMA Coastal Mapping Update. (See Exhibit A).

The Town budgeted an additional \$20,000 for fiscal year 2014 to 2015 to continue this mapping study.

The Board agreed to go forward with the FEMA map study of Goose Rocks Beach.

12. Authorize Town Manager to transfer Engine 23 to Wildwood Fire Company.

Motion by Selectman Barwise, seconded by Selectman Matthews-Bull, to authorize the Town Manager to transfer Engine 23 to Wildwood Fire Company. **Vote: 4-0.**

Town Manager Laurie Smith said the truck should be arriving this weekend.

13. Award bid for grinder pump replacement for the wastewater department.

Ms. Smith said the wastewater department had some issues with the pump and are not sure if they want to continue with this vendor. She asked the Board to table this item. The Board followed her suggestion and tabled this item.

14. Award the bid for a 2015 International 7400 SF plow truck (single axle dump truck with plow assembly and hydraulics) including trade in of 2005 International 7400 SF plow truck (single axle with side dump body, plow and wing).

Russ Welch explained the bids for the 2014 5 ton plow truck. He recommends awarding the bid to Portland North Truck Center with Viking Cives Body and Plowgear at a cost of \$127,801.

Motion by Selectman Barwise, seconded by Selectman Matthews-Bull, to award the bid to Portland North Truck Center with Viking Cives Body and Plowgear at a cost of \$127,801. **Vote:** 4-0

15. Approve Quit Claim Deed for Kennebunkport Cruickshank Real Estate Trust.

This parcel was tax acquired and has been paid off.

Motion by Selectman Barwise, seconded by Selectman Matthews-Bull, to approve the Quit Claim Deed for Kennebunkport Cruickshank Real Estate Trust. **Vote:** 4-0.

16. Approve a street opening permit application from Deborah Davis to connect water to new house on Langsford Road.

Motion by Selectman Barwise, seconded by Selectman Matthews-Bull, to approve the street opening permit application from Deborah Davis to connect water to new house on Langsford Road. **Vote:** 4-0.

17. Appoint Boards/Committees.**Administrative Code Committee**

Motion by Selectman Barwise, seconded by Selectman Matthews-Bull, to reappoint Wayne Adams, Christian Barner, Richard Smith, H. Steadman Seavey, to the Administrative Code Committee for a term expiring in July 2015. **Vote:** 4-0

Board of Assessment Review

Motion by Selectman Barwise, seconded by Selectman Matthews-Bull, to reap-

point to the Board of Assessment Review: Wayne Fessenden to a term expiring in July 2017, and to appoint Chris Perry to full membership with his term expiring in July 2017, and Jean Conaty as an alternate with her term expiring in July 2017. **Vote:** 4-0.

Cape Porpoise Pier

Motion by Selectman Barwise, seconded by Selectman Matthews-Bull, to reappoint to the Cape Porpoise Pier Advisory Committee: Jason Daggett, Peter Eaton, Peter Garsoe, Robert O'Reilly, Zandy Talmadge, and Eric Wildes to a term expiring in July 2015 and to appoint: Chip Zeiner, Jonathan Nunan, Joe Nickerson, and Harrison McLean to a term also expiring in July 2015. **Vote:** 4-0.

Cemetery Committee

Motion by Selectman Barwise, seconded by Selectman Matthews-Bull, to reappoint to the Cemetery Committee for a term expiring in July 2015: Lynda Bryan, Ann Doe, Ruth Fernandez, Greg Pargellis, Ann Sanders, and Rita Schlegel. **Vote:** 4-0.

Conservation Commission

Motion by Selectman Barwise, seconded by Selectman Matthews-Bull, to reappoint Alice Finnegan, to the Conservation Commission for a term expiring in July 2017. **Vote:** 4-0.

Government Wharf

Motion by Selectman Barwise, seconded by Selectman Matthews-Bull, to reappoint Jeff David, Ron Francoeur, and Dennis Goulet to the Government Wharf Committee for a term expiring in July 2015 and to appoint Chris Welch to a term expiring in July 2015. **Vote:** 4-0.

Kennebunk River Committee

Motion by Selectman Barwise, seconded by Selectman Matthews-Bull, to reappoint Mark Sutton to the Kennebunk River Committee for a term expiring in July 2017. **Vote:** 4-0.

Parsons Way Committee

Motion by Selectman Barwise, seconded by Selectman Matthews-Bull, to appoint to the Parsons Way Committee: Gordon Ayer for a term expiring in July 2015, and Barbara Barwise for a term expiring in July 2017. **Vote:** 4-0.

Chair Daggett read into the record recognition of Planning Board service for Leo Famolare and Gordon Ayer. (See Exhibit B)

Planning Board

Motion by Selectman Barwise, seconded by Selectman Matthews-Bull, to reappoint Helen Conaty and Peter Fellenz to full membership on the Planning Board with terms expiring in July 2017, and to appoint Tom Boak and Ray Hil-

wigs as alternates on the Planning Board for terms expiring in July 2015. **Vote:** 4-0.

Public Safety Committee

Motion by Selectman Barwise, seconded by Selectman Matthews-Bull, to reappoint to the Public Safety Committee: Allan Moir, fire chief/sewer superintendent; Mike Claus, highway superintendent; Craig Sanford, police chief; Jim Burrows, Emergency Management Director, and Shawn Sullivan, chief of KEMS to the Public Safety Committee for terms expiring in July 2015. **Vote:** 4-0.

Road Book Committee

Motion by Selectman Barwise, seconded by Selectman Matthews-Bull, to reappoint Jim Burrows and Richard Stedman to the Road Book Committee for a term expiring in July 2015. **Vote:** 4-0.

Sewer Advisory Committee

Motion by Selectman Barwise, seconded by Selectman Matthews-Bull, to reappoint Bob Convery, Stephen Couture, Richard Johnson, and Joseph Martin Mead to the Sewer Advisory Committee for terms expiring in July 2015. **Vote:** 4-0.

Shade Tree Committee

Motion by Selectman Barwise, seconded by Selectman Matthews-Bull, to reappoint Stephen Doe, Kimberly Gurski, Kathryn Leffler, Karen Schlegel, and Suzanne Stohlman to the Shade Tree Committee for terms expiring in July 2015. **Vote:** 4-0.

Sidewalk Committee

Motion by Selectman Barwise, seconded by Selectman Matthews-Bull, to reappoint Ralph Clement, Tony Viehmann, Michael Claus, and Craig Sanford to the Sidewalk Committee for terms expiring in July 2015 and to appoint Kristen Garvin to the Sidewalk Committee with her term also expiring in July 2015. **Vote:** 4-0.

ZBA

Motion by Selectman Barwise, seconded by Selectman Matthews-Bull, to reappoint Paul Cadigan to the ZBA for a term expiring in July 2015. **Vote:** 4-0.

Shellfish Conservation Committee

Motion by Selectman Barwise, seconded by Selectman Matthews-Bull, to reappoint J. Steven Kingston, Eric Wildes, and Charles Zeiner to the Shellfish Conservation Committee for a term expiring in July 2015. **Vote:** 4-0.

Selectmen Representatives for term expiring in July 2015

The Board agreed to represent the following committees:

Committee	Selectmen
Beach Advisory Committee	Sheila Matthews-Bull
Cape Porpoise Pier Committee	Edward Hutchins
Government Wharf	Allen Daggett
Graves Library	Patrick Briggs
K.E.M.S.	Patrick Briggs
Public Safety Committee	Stuart Barwise
S.M.R.P.C.	Stuart Barwise
Growth Planning Committee	Patrick Briggs
Planning Board	Patrick Briggs
Shade Tree Committee	Sheila Matthews-Bull
Zoning Board of Appeals	Sheila Matthews-Bull

18. Appoint Tree Warden.

Motion by Selectman Barwise, seconded by Selectman Matthews-Bull, to appoint Karen Schlegel as Tree Warden to a term expiring in July 2015. **Vote:** 4-0.

19. Discuss priorities for fiscal year 2015.

Ms. Smith said the department heads have been working on developing a capital improvement plan to project their needs for the next five years. She suggested doing a couple of workshops before the meeting or having a special meeting. She asked the Board how it wants to proceed.

The Board agreed to have a special meeting in September to work on this plan.

20. Request to consider reciprocal beach stickers between Kennebunk and Kennebunkport.

Ms. Smith said people have contacted the Chamber of Commerce about reciprocal beach stickers between the towns of Kennebunk and Kennebunkport. Reciprocity would only be for town residents. She is waiting to see how Kennebunk responds to this suggestion.

The Board will discuss this when it hears back from the Town of Kennebunk.

21. Authorize the Quit Claim Deed and transfer of Map 24, Block 1, Lot 2, and Map 24, Block 1, Lot 16 to Habitat for Humanity.

Motion by Selectman Barwise, seconded by Selectman Matthews-Bull, to authorize Town Manager to sign a Quit Claim Deed to transfer parcels located at Map 24, Block 1, Lot 2; and Map 24, Block 1, Lot 16 to Habitat for Humanity.

Vote: 4-0.

Steve Bolton, executive director of Habitat for Humanity, sent a letter to the Board stating that the property would "be used only as a house lot, and will not be resold for fundraising purposes."

22. Other business.

Ms. Smith announced the following:

- Stuff the Backpack program, sponsored by the Health Council, is asking residents to help them meet their goal of providing 25 backpacks to school children in Kennebunk and Kennebunkport.
- Kennebunkport received a Certificate of Achievement Award for Excellence in Financial Reporting from the Government's Financial Office, which is the highest award given in municipal government financial reporting. She thanked Treasurer Jen Lord for her work in completing the Comprehensive Annual Financial Report (CAFR).
- There is a homeownership opportunity for a qualified veteran through Habitat for Humanity. Town veterans may apply at Habitat for Humanity York County, P.O. Box 267, Kennebunk, ME 04043, or by calling Habitat at 985-4850.

a. Vote for representative on the MMA Legislative Policy Committee.

Ms. Smith said that John Sylvester, selectman from the Town of Alfred, is the only one on the ballot as a representative on the MMA Legislative Policy Committee.

Motion by Selectman Barwise, seconded by Selectmen Matthews-Bull, to vote for John Sylvester to be a representative on the MMA Legislative Policy Committee. **Vote:** 4-0.

Chris Perry explained what happened at the Facilities Committee Meeting. He said they will meet again on July 16, at 6 PM, at the Kennebunk Elementary School.

Ms. Smith announced that DOT is having a preliminary meeting on July 15, at 6 PM, in the Kennebunk High School Auditorium, 89 Fletcher Street, to identify local concerns and issues with the Mat Lanigan Bridge replacement.

23. Approve the July 10, 2014, Treasurer's Warrant.

Motion by Selectman Barwise, seconded by Selectmen Matthews-Bull, to approve the July 10, 2014, Treasurer's Warrant. **Vote:** 4-0.

24. Adjournment.

Motion by Selectman Barwise, seconded by Selectman Matthews-Bull, to adjourn. **Vote:** 4-0.

The meeting adjourned at 8:35 PM.

Submitted by Arlene McMurray, Administrative Assistant

EXHIBIT A - 7-10-2014

FEMA Coastal Mapping Update for Kennebunkport, ME

Prepared by Ransom Consulting, Inc.

Bob Gerber & Leila Pike

7/10/14

EXHIBIT A - 7-10-2014

FEMA Coastal Mapping Update for Kennebunkport, ME

Prepared by Ransom Consulting, Inc.

Bob Gerber & Leila Pike

7/10/14

Overview

- Past History and Schedule looking forward
- Discussion of the Major Issue: Wave Setup
 - Gerber Method of 2010 put into FEMA 2013 Maps
 - DIM (FEMA's Direct Integration Method)
 - SWAN 1-D
 - Setup now extended into estuaries
- Goose Rocks Beach
- Kennebunk River Circulation Study

Ransom Project List

FEMA Events Since June 2009

Task Name	2009			2010			2011			2012			2013			2014			2015
	Qtr1	Qtr2	Qtr3	Qtr1	Qtr2	Qtr3	Qtr1	Qtr2	Qtr3	Qtr1	Qtr2	Qtr3	Qtr1	Qtr2	Qtr3	Qtr1	Qtr2	Qtr3	Qtr4
FEMA Releases Preliminary Maps																			
FEMA starts Municipal Appeal Period																			
FEMA cancels Municipal Appeal Period																			
FEMA holds RiskMAP Mtg; asks for MOU																			
Town submits draft MOU to FEMA																			
FEMA begins work on Revised Maps																			
Gerber requests to modify inland flood zones																			
FEMA replies to MOU-no MOU																			
Gerber provides protocol for inland flood mapping																			
FEMA approves inland flood methodology																			
Gerber submits Tyler Bk pilot study to FEMA																			
Gerber submits draft Kport inland flood maps																			
Gerber submits final inland flood maps																			
FEMA delivers Work Maps																			
Gerber meets in Boston with FEMA re Ken Riv protocol																			
FEMA Provides first review of inland flood zones																			
Gerber provides Kport with map of new zones added																			
FEMA schedules start Municipal Appeal Period																			
Gerber starts work on Ken Riv appeal																			
FEMA issues new Preliminary Maps																			
FEMA holds York Cty COO mtg																			
FEMA schedules start Municipal Appeal Period																			
FEMA schedules start Municipal Appeal Period																			
FEMA announces delay in start Appeal Period																			
Best guess start FEMA Municipal Appeal Period																			
Best guess Effective Date of new Maps																			

7/7/14

Wave Setup

- e. In the surf zone, $\bar{\eta}$ increases between the break point and the shoreline (Figure II-4-7). The gradient, assuming linear theory ($S_{xx} = 3/16 \rho g H^2$), is given by

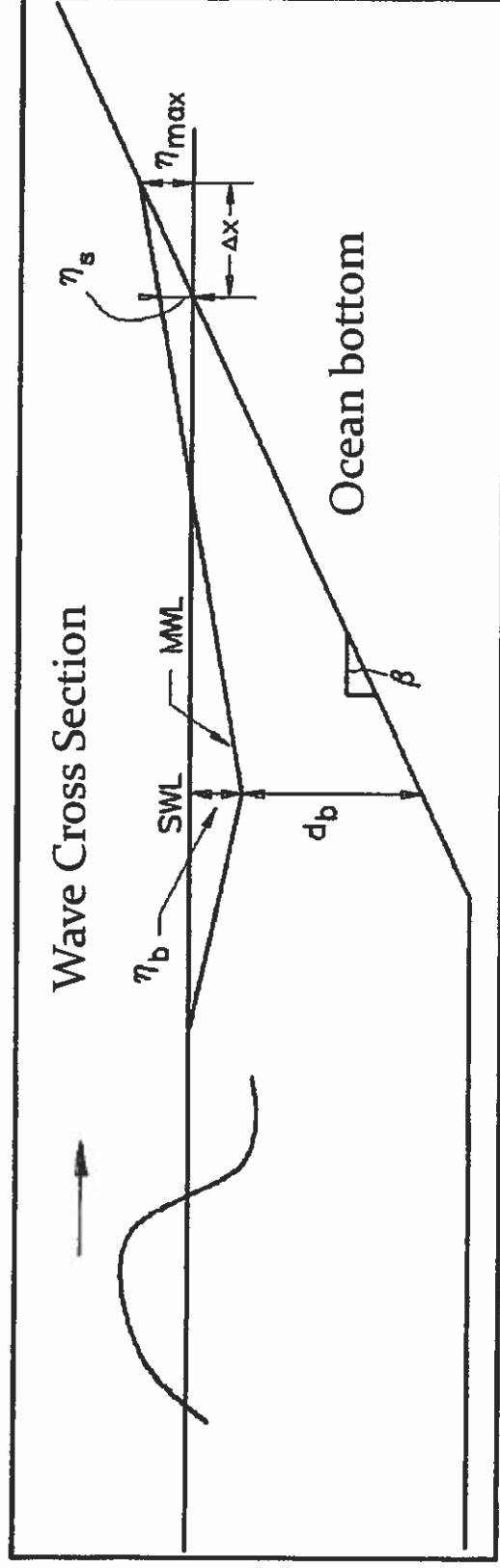
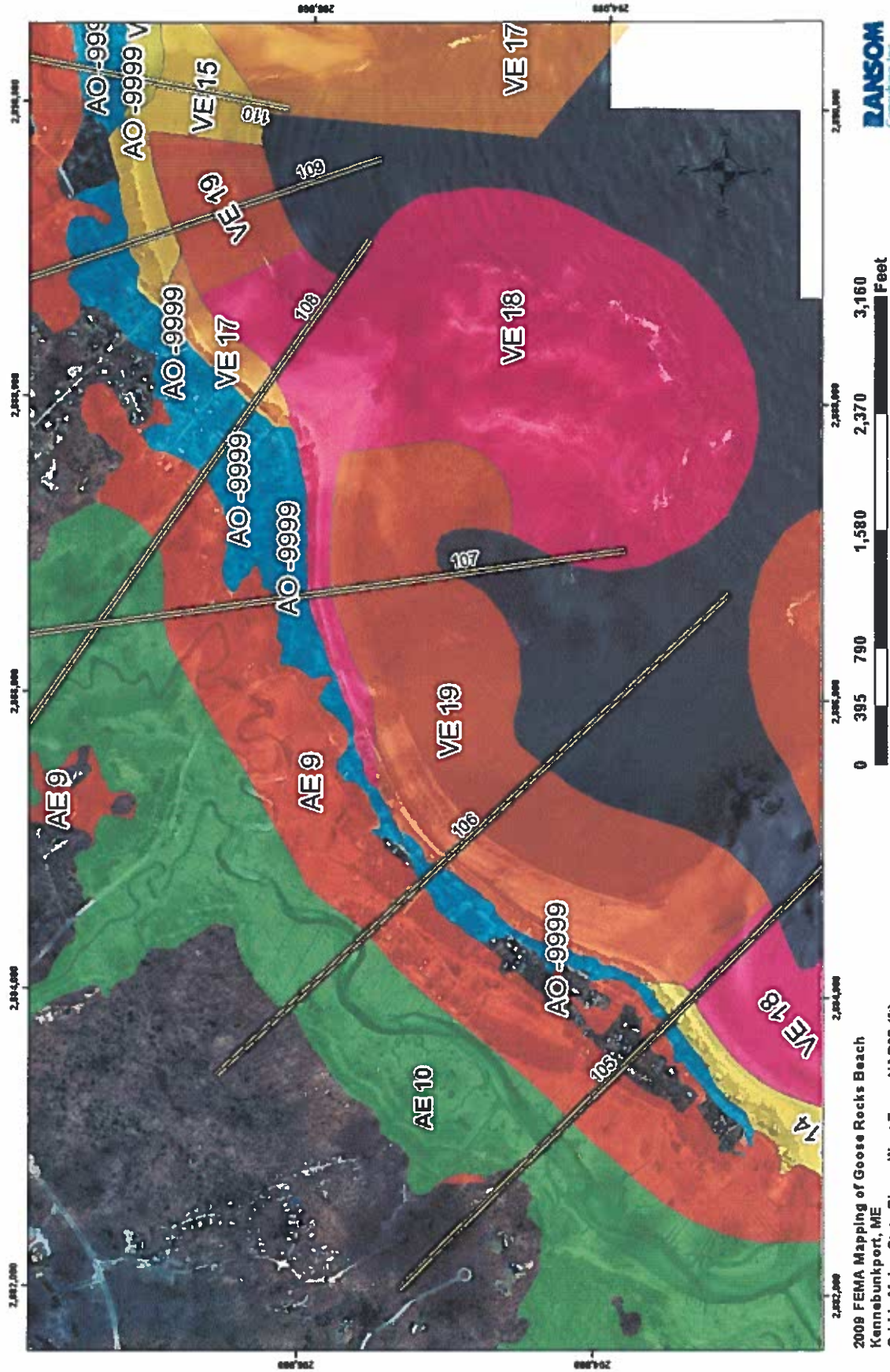


Figure II-4-7. Definition sketch for wave setup

$$\frac{d\bar{\eta}}{dx} = -\frac{3}{16} \frac{1}{h + \bar{\eta}} \frac{d(H^2)}{dx}$$

Wave setup inside sheltered bays is typically 1 to 2 feet; on open ocean exposures it can be up to 4 or 5 feet. This is added to the SWEL and wave (Π -4-22) height to determine the Critical Wave Height crest elevation near the shore and in estuarine areas

FEMA 2009 Proposed Map, Goose Rocks



2009 FEMA Mapping of Goose Rocks Beach
 Kennebunkport, ME
 Grid is Maine State Plane, West Zone, NAD83 (ft)
 RGG 7-8-14 111.06021

RANSOM
 Consulting, Inc.



RANSOM
Consulting, Inc.

Comparison of Setup Calculation Methods

1) Direct Integration Method (DIM)

- **One-dimensional method**
accounting for spectral shape, bathymetry, and based on integration of governing equations from deep to shallow water
- Calculates static and dynamic components of wave setup accounting for as much of the physics as possible
- Uses a “**simple set of empirical equations**”
- Developed for the **Pacific Coast**

2) Simulating **WAves** Nearshore (**SWAN**)

- **One or two-dimensional model**
- Based on wave action balance equations
- Incorporates wave generation, dissipation, and wave interactions
- Based on specific wave spectral parameters and modification of the spectra as the wave advances from offshore
- More suitable for **East Coast**

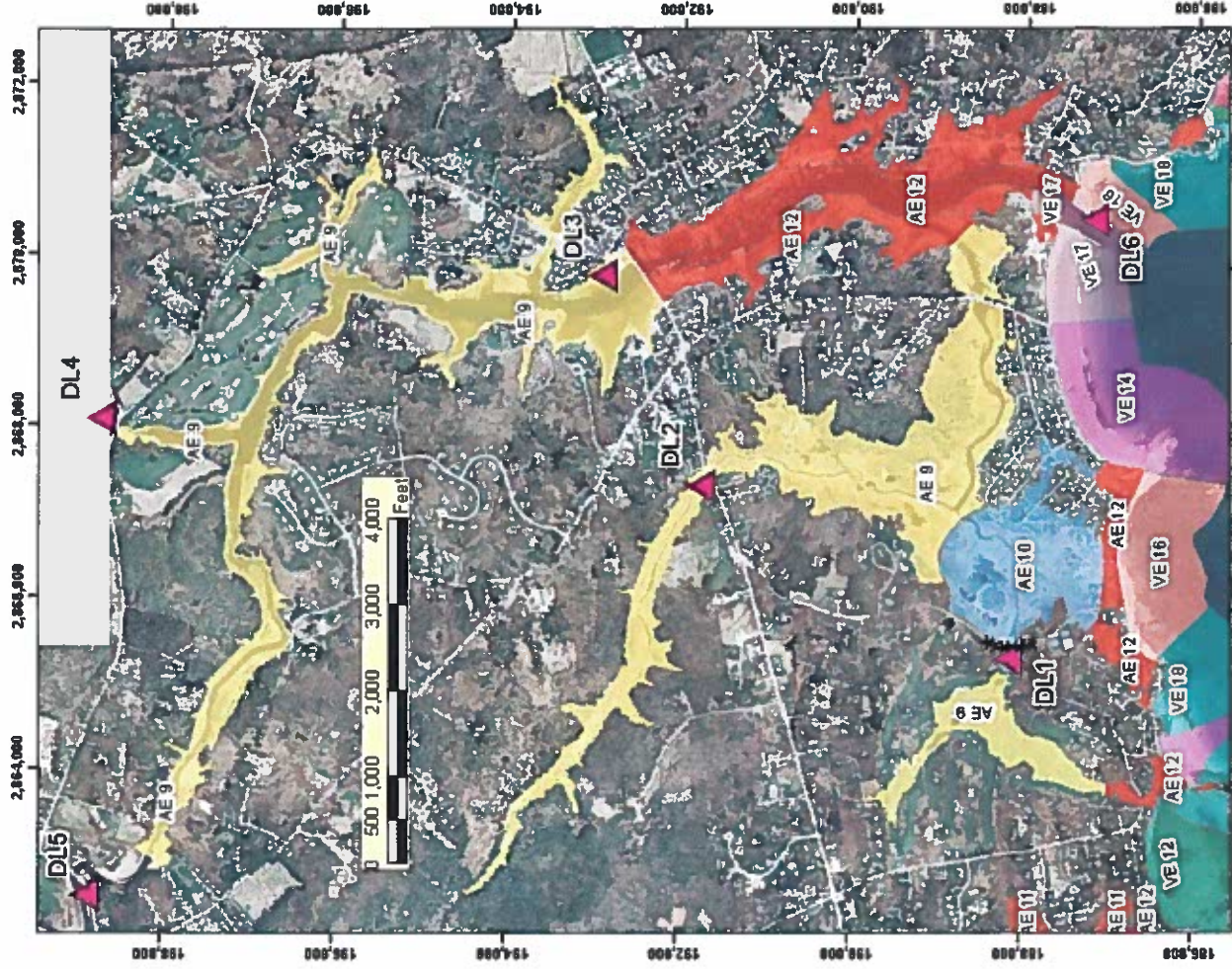
FEMA Wave Parameter Values **Goose Rocks Beach**

Old Transect #	New Transect #	FEMA 2013 Setup, ft.	Gerber 2010 Setup, ft.	Hs, ft	Tp, sec	Runup, ft.	Critical Wave Crest Elev., ft
KP-6	YK-105	1.1	1.1	7	11.1	2.2	15.5
KP-5	YK-106	2.2	2.2	7.5	11.1	16.4	17
KP-4	YK-107	2.1	2.1	8	11.1	8.6	16.9
KP-3	YK-108	2	2	9	11.1	6.9	16.7
KP-2	YK-109	1.7	1.7	8	11.1	8.8	16.2
KP-1	YK-110	1.7	1.7	8	11.1	9.7	16.2

Comparison of Total Water Levels Computed from Wave Setup by DIM
method and by SWAN 1-D method

Municipality	Transect	FEMA TWL, NAVD88, ft	SWAN 1-D TWL, NAVD8 8, ft	TWL Diff btwn FEMA and SWAN, ft	SWAN 1-D TWL, NAVD8 8, ft	TWL Diff btwn FEMA and SWAN 1-D TWL, NAVD8 8, ft
Saco	YK-130	13.0	10.6	2.4	10.6	1.7
Saco	YK-131	12.2	10.8	1.4	10.8	1.9
Saco	YK-132	13.6	10.6	3.0	10.6	1.7
Saco	YK-133	12.4	10.9	1.5	10.9	2.0
Saco	YK-134	12.2	10.8	1.4	10.8	1.9
Saco	YK-135	12.6	10.8	1.8	10.8	1.9
Saco	YK-136	12.6	10.8	1.8	10.8	1.9
OOB	YK-137	12.5	10.7	1.8	10.7	1.8
OOB	YK-138	13.1	10.8	2.3	10.8	1.9
OOB	YK-139	13.0	10.8	2.2	10.8	1.9
OOB	YK-140	12.8	10.8	2.0	10.8	1.9
OOB	YK-141	12.3	10.7	1.6	10.7	1.8
OOB	YK-142	12.9	10.8	2.1	10.8	1.9
OOB	YK-143	12.5	10.6	1.9	10.6	1.8
OOB	YK-144	12.7	10.7	2.0	10.7	1.9
Scarboro	CM-1	12.5	10.6	1.9	10.6	1.8
Scarboro	CM-2	12.3	10.6	1.7	10.6	1.8
Scarboro	CM-3	12.3	10.6	1.7	10.6	1.8
Scarboro	CM-4	11.9	10.6	1.3	10.6	1.8

FEMA 2013 Proposed Flood Zones on Kennebunk River

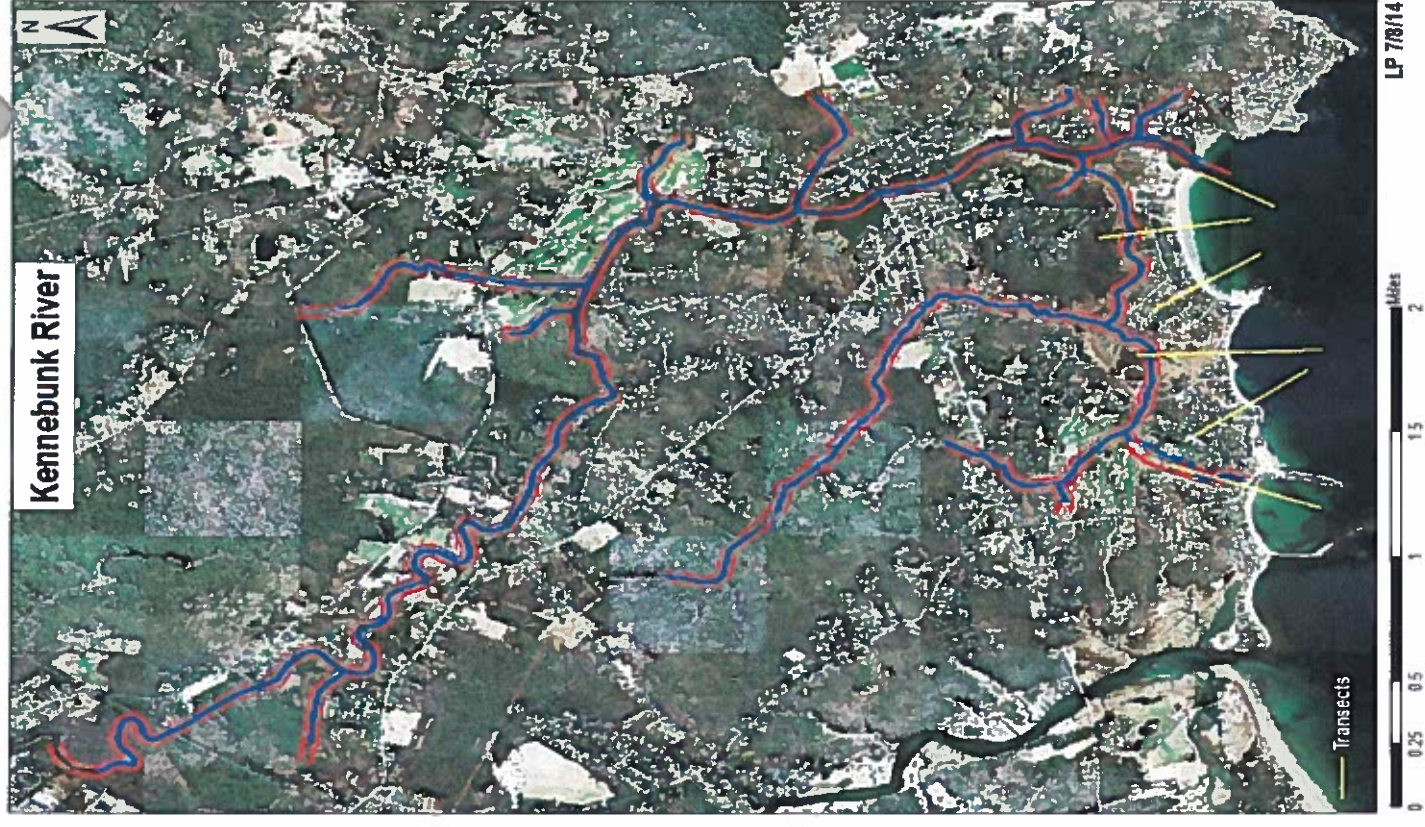


Location of 2013 FEMA zones and tidal gaging stations
Kennebunk River Circulation Study
Grid is Maine State Plane, West Zone, NAD83 (ft)
RGG 7-8-14 111.06021

Three parts to flood level predictions within Kennebunk River:

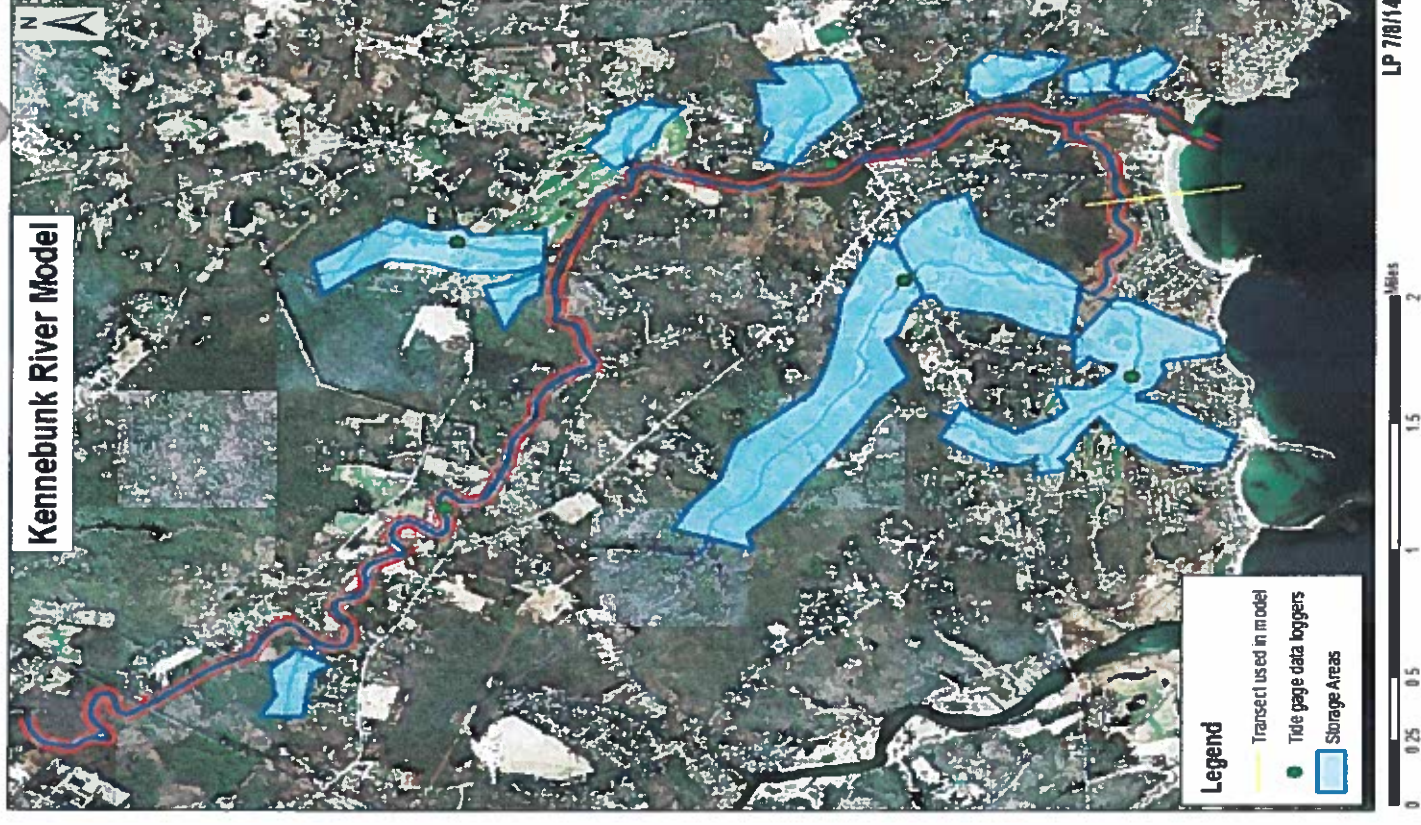
Modeling a 3 day storm:

1. Wave Model
 - Used to propagate large, offshore waves to the shore
 - Calculate wave setup at entrance
2. River Model
 - Uses estimated river flows
 - Will then propagate total water levels from mouth of river (surge + setup) up the river (since tidal) for the 3 day period (15 minute intervals)
3. Runup and Overtopping producing overwash
 - Calculated along transects at shore

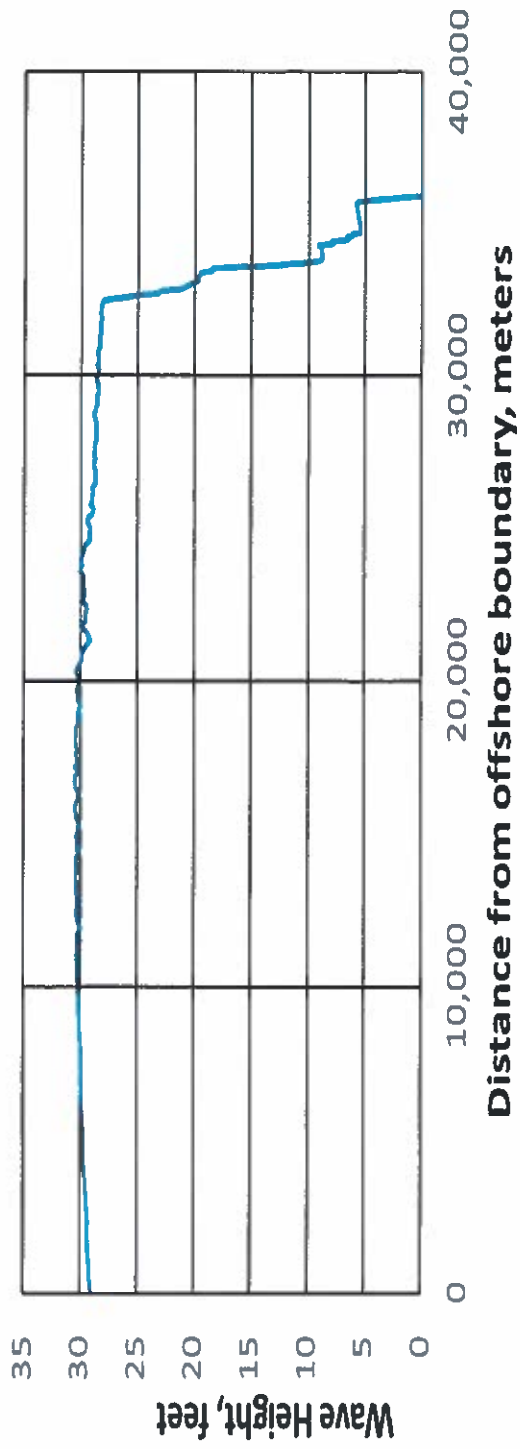


River Model (HEC-RAS)

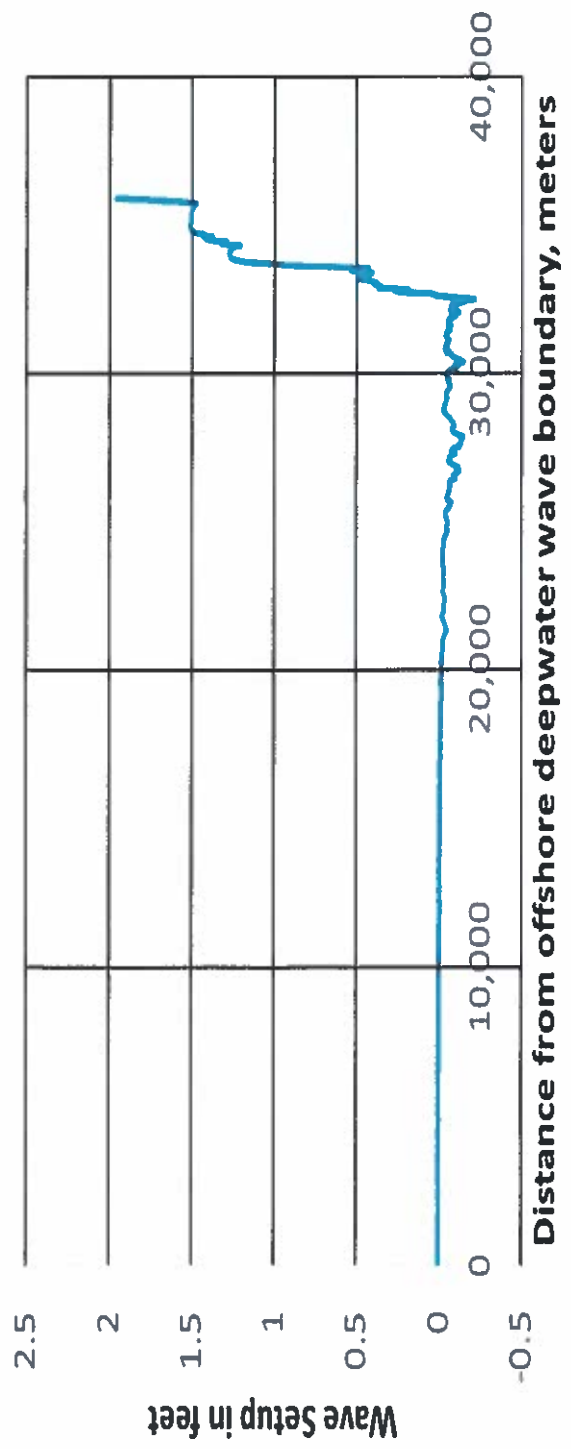
- DYNLET (first model attempt) did not have capability to simulate all the factors we wanted to account for
- Model simplified in HEC-RAS using storage areas to represent tributaries
- Tide gage data loggers placed in 6 locations Nov. 2013 to calibrate model
- Field visit to measure culverts and bridges (flow restrictors) for inputs to model
- USGS regression equations used to estimate freshwater streamflow
- Boundary condition at the river entrance moves up and down with variable tide stage plus storm surge plus wave setup
- Wind is applied at variable speeds over the hypothetical 72-hour 100-year storm

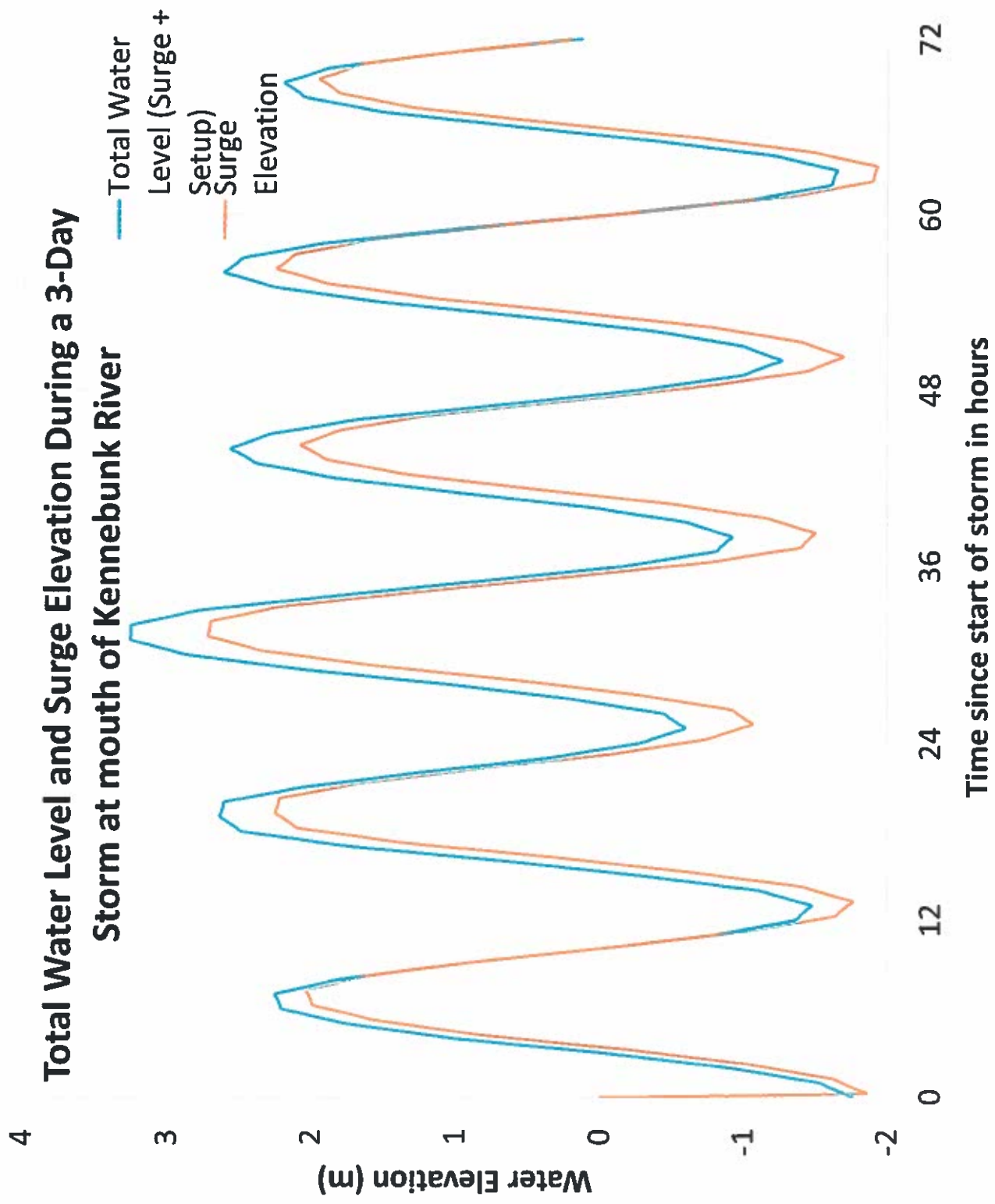


Significant Wave Height along Wave Ray



Wave Setup (m) at Mouth of Kennebunk River





Other inputs to Kennebunk River Modeling

- Onshore Wind—variable strength over the 72-hr storm, following past storm patterns and peaking at 56.1 mph
- Wave overwash (contributing water influx) into the west tributary at the peak of the storm
- Wave height and period varies over the storm; peaks at 29.9' and 12.5 seconds at offshore boundary
- Wave Generation inside of the River—STWAVE modeling at peak water condition

EXHIBIT B- 7-10-2014

"Recognition of Planning Board service

As Leo Famolare and Gordon Ayer step down from the Planning Board, we wish to publically express our gratitude for their contributions. They both joined the Board in early 2002 - which makes it over 12 years of being on the Planning Board. That length of service on an active Town Board shows a major commitment to and concern for the Town's well-being. Leo Famolare and Gordon Ayer have both earned their merit badges - and then some - for civic duty. Twelve years has meant attending over 250 meetings, going on many site walks and written who knows how many Findings of Facts. It has meant wrestling with difficult and controversial cases as well as the innumerable routine ones - all while trying to do what is right and best for the Town.

The Town of Kennebunkport officially offers its thanks to both Leo and Gordon for their service and recognizes their many years of excellent service to the Town."