

**Board of Selectmen/Assessors Meeting
Town Office-6 Elm Street
June 8, 2017 – 7:00 PM**

Minutes of the Special Selectmen Meeting of June 8, 2017

Selectmen present: Stuart E. Barwise, Patrick Briggs, Edward W. Hutchins, Allen A. Daggett

Selectman absent: Sheila Matthews-Bull

Others present: Susan Boak, Jerry Collins, Michael Davis, Scott Gagnon, David James, Bill Leffler, Laurie Smith, Arlene McMurray

1. Call to Order.

Chair Barwise called the meeting to order at 6:03 PM.

2. Approve the May 25, 2017, selectmen meeting minutes.

Motion by Selectman Hutchins, seconded by Selectmen Daggett, to approve the May 25, 2017, selectmen meeting minutes. **Vote:** 4-0.

3. Public Forum (This is an opportunity for anyone who wants to address the Board of Selectmen with any issue that is not on the agenda.).

There were no comments.

4. Consider a liquor license renewal application for Coveside Resort, LLC., d.b.a. The Lodge on the Cove, 29 South Main St.

Motion by Selectman Daggett, seconded by Selectmen Hutchins, to approve the liquor license renewal application for Coveside Resort, LLC., d.b.a. The Lodge on the Cove, 29 South Main St. **Vote:** 4-0.

5. Consider a special amusement permit renewal application for Coveside Resort, LLC., d.b.a., The Lodge on the Cove, 29 South Main Street.

Motion by Selectman Hutchins, seconded by Selectmen Daggett, to approve the special amusement permit renewal application for Coveside Resort, LLC., d.b.a., The Lodge on the Cove, 29 South Main Street. **Vote:** 4-0.

6. Consider a renewal liquor license application submitted by US Hotels New England LLC, US Hotels New England Management Corp, d.b.a. The Breakwater Inn, 133 Ocean Avenue.

Motion by Selectman Hutchins, seconded by Selectmen Daggett, to approve the renewal liquor license application submitted by US Hotels New England LLC, US Hotels New England Management Corp, d.b.a. The Breakwater Inn, 133 Ocean Avenue. **Vote:** 4-0.

7. Consider a renewal special amusement permit submitted by US Hotels New England LLC, d.b.a. The Breakwater Inn, 133 Ocean Avenue.

Motion by Selectman Daggett, seconded by Selectmen Hutchins, to approve a special amusement permit renewal submitted by US Hotels New England LLC, d.b.a. The Breakwater Inn, 133 Ocean Avenue. **Vote:** 4-0.

8. Presentation by Scott Gagnon on the chemistry of marijuana.

Mr. Collins gave his presentation and answered questions from the audience. (See Exhibit A.)

Dr. Jerry Collins commented he has had lots of experience working with adolescents who smoked marijuana and let it be known that he is available to discuss his experiences with anyone who is interested. He said the Board should think very carefully before it starts giving licenses. He also mentioned that the presentation by Kevin Wong at Wells High School this past Monday was also very informative. He said Nancy Ford in Wells has a lot of educational information.

David James had questions along with Susan Boak.

Selectman Hutchins wanted it on record that he supports having a dry town.

9. Consider request from the Rotary Club to rename Dock Square to Duck Square for one day on August 19 for the Duck Race and River Fest event.

Motion by Selectman Hutchins, seconded by Selectmen Daggett, to approve the request from the Rotary Club to rename Dock Square to Duck Square for one day on August 19 for the Duck Race and River Fest event. **Vote:** 4-0.

10. Meet as Assessors to consider the following tax abatements.

Property Owner	Location	Map	Blk	Lot(s)	2017 Tax Abatements
Shawmut Woods Homeowners Assn.	Shawmut Woods Subdivision/ Squier Lane	22	1	1	\$344.71
Lynnfield Woods Homeowners Assn.	Lynnfield Woods Subdivision/ Bailey Court	21	4	23A	\$373.03

Assessor's Assistant Becky Nolette explained the reasons for her recommendation to give tax abatements to both subdivisions.

Motion by Selectman Hutchins, seconded by Selectmen Daggett, to approve the tax abatements for Shawmut Woods Homeowners Assn. in the amount of \$344.71 and for Lynn Woods Homeowners Assn. in the amount of \$373.01. **Vote:** 4-0.

11. Consider amendment to the Sewer Use Ordinance.

There was discussion on whether to wait until another meeting when Selectman Matthews-Bull could be present because she had a strong opinion on the unit fee. The Board decided it should move forward with this item instead of waiting for another meeting. (See Exhibit B).

Motion by Selectman Hutchins, seconded by Selectmen Briggs, to approve the Sewer Use Ordinance as presented. **Vote:** 3-1/Selectman Daggett opposed.

12. Other business.

Town Manager Laurie Smith mentioned that she received a street opening permit for the Graves Library project. The sidewalk will need to be opened for a sprinkler system.

Motion by Selectman Hutchins, seconded by Selectman Briggs, to approve the street opening permit for Louis T. Graves Memorial Library. **Vote:** 4-0.

Ms. Smith also mentioned that the Town Offices have routinely closed early on June 30 to process the end of the fiscal year. They will close at 3 PM.

13. Approve the June 8, 2017, Treasurer's Warrant.

Motion by Selectman Hutchins, seconded by Selectmen Briggs, to approve the June 8, 2017, Treasurer's Warrant. **Vote:** 4-0.

14. Adjournment.

Motion by Selectman Hutchins, seconded by Selectmen Briggs, to adjourn. **Vote:** 4-0.

The meeting adjourned at 8:12 PM.

Submitted by

Arlene McMurray
Administrative Assistant

MAINERS
PROTECTING OUR YOUTH
AND COMMUNITIES



Today's Marijuana, Medical Marijuana, and
Implications for Public Health

Scott M. Gagnon, MPP, PS-C

Mainers Protecting Our Youth and Communities
Smart Approaches to Marijuana, Maine



Today's Marijuana

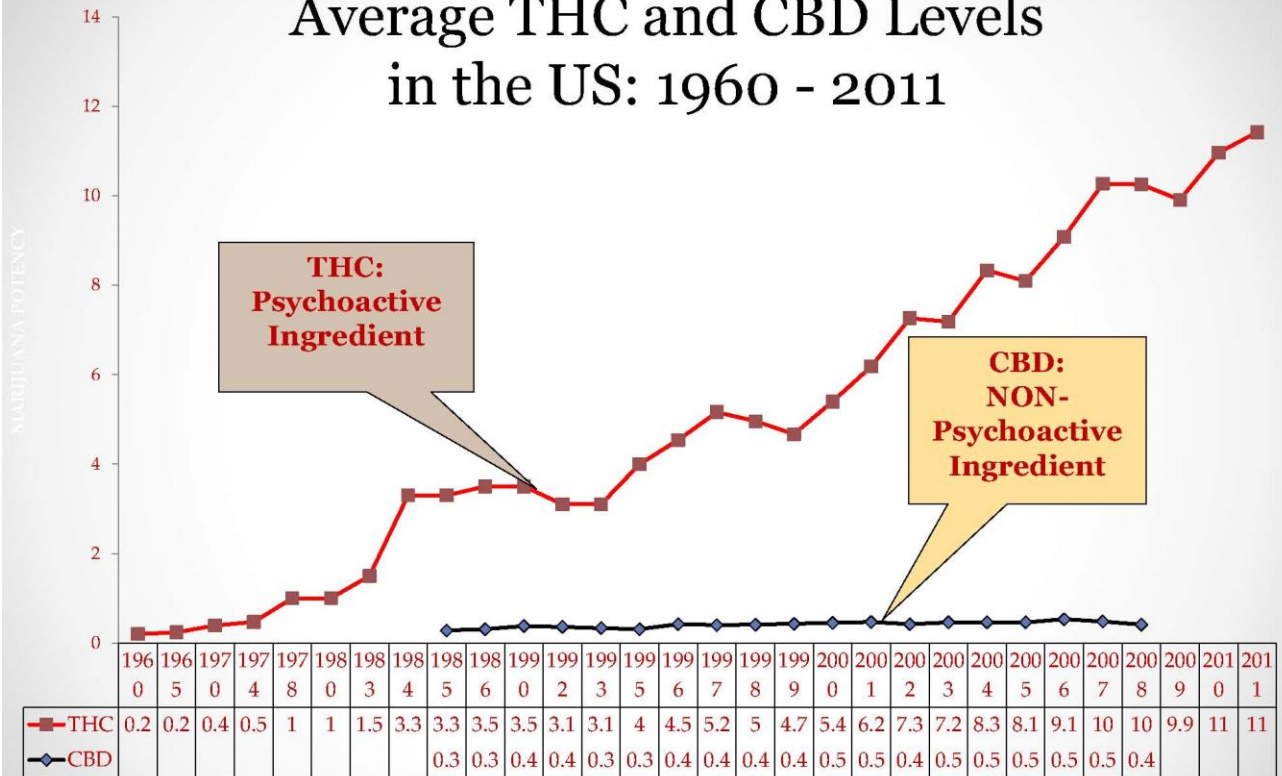
...







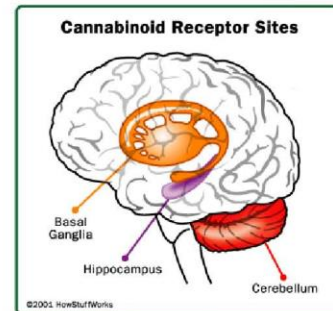
Average THC and CBD Levels in the US: 1960 - 2011



Source: Mehmedic et al., 2010

Marijuana, the Brain, and Impairment

- The human brain is not fully developed until age 25.
- The teen brain is more vulnerable to the negative effects of marijuana use.
- The effects of being high creates:
 - Memory problems
 - Problems with processing information
 - Poor sensory & time perception
 - Poor concentration & coordination



Source: NIDA Research Report Series: Marijuana Abuse (rev. July 2012)

New Study Finds More Evidence of Marijuana's Damage on the Brain

New study from University of Michigan
[published](#) in *JAMA Psychiatry*:

- long-term marijuana usage is associated with a decrease in the brain's response time.
- Over time, use alters anticipatory reward processing in the brain and may increase risk for continued drug use and addiction
- <http://www.cadca.org/resources/new-study-finds-more-evidence-marijuanas-damage-brain>

Lasting impairment after use can result in difficulty with:

- Complex tasks
- Learning new skills
- Alertness and attention
- Ability to recall information
- Decision making

When using, impaired decision-making can result in:

- Risky sexual behavior – STD's, HIV and unintended pregnancy
- Increased risk of exposure to other substances

Source: Jacobus, J, Bava, S. et. al. (2009) Functional Consequences of Marijuana Use in Adolescence. *Pharmacology, Biochemistry and Behavior* 92(4).

Impairment: Driving

- Teens are at a high risk of being involved in vehicle accidents. When combined with their lack of experience, **being under the influence of marijuana increases this risk even further.**
- Studies found that **driving ability became impaired after marijuana use.**
- Drivers under the influence of marijuana have **shorter attention spans and reduced reaction times.**

Source: Asbridge, M & Hayden, JA (2012) Acute cannabis consumption and motor vehicle collision risk: systematic review of observational studies and meta-analysis. *British Medical Journal*, 344:e536

Marijuana and Addiction

❖ 1 in 6 teens who use marijuana will become addicted

❖ Source: National Institute of Drug Abuse. Dec. 12, 2012. <http://www.nih.gov/news/health/dec2012/nida-19.htm>

● 90% of all addictions start in the teenage years.

● Source: CASA Columbia, 2011 <http://www.safelaunch.org/links/the-science-of-addiction/>

YOUTH DATA IN MAINE – MIDDLE SCHOOL

	2013	2015
Lifetime Use	8.2%	7.2%
Past 30 Day Use	4.4%	3.8%
Easy to Obtain	17.8%	15.3%
Parents accepting of use	5.1%	5.1%
Low perceived risk of harm from regular use	29.4%	28.5%

NOTE: None of the changes from 2013 to 2015 are statistically significant. All measures are statistically flat.

Maine Integrated Youth Health Survey,
2015

YOUTH DATA IN MAINE – HIGH SCHOOL

	2013	2015
Past 30 Day Use	22.0%	19.1%
Easy to Obtain	56.2%	54.6%
Parents accepting of use	15.3%	16.6%
Low perceived risk of harm from smoking 1-2 times/week	58.3%	59.9%
Peers accepting of regular use	52.7%	53.3%

NOTE: None of the changes from 2013 to 2015 are statistically significant. All measures are statistically flat.

Maine Integrated Youth Health Survey,
2015

Marijuana and Addiction Maine Treatment Data

- **18 Years and Younger**
 - At intake, 56% indicate marijuana as primary drug for treatment (27% listed alcohol as primary drug)
- **14 Years and Younger**
 - At intake, 100% of Maine 14 year olds and younger seeking substance abuse treatment listed marijuana as primary drug of abuse

Source: Maine Treatment Data Systems 2013-2014 Data Fact Sheet - Data obtained from: <https://portal.maine.gov/tdsreports/>

The Myth of Marijuana Replacing Other Drugs

For those 18 and under seeking treatment for Alcohol, Heroin, or Prescription Opiates, Marijuana is the leading secondary drug of abuse.

Source: Maine Treatment Data Systems 2013-2014 Data Fact Sheet - Data obtained from: <https://portal.maine.gov/tdsreports/>

●

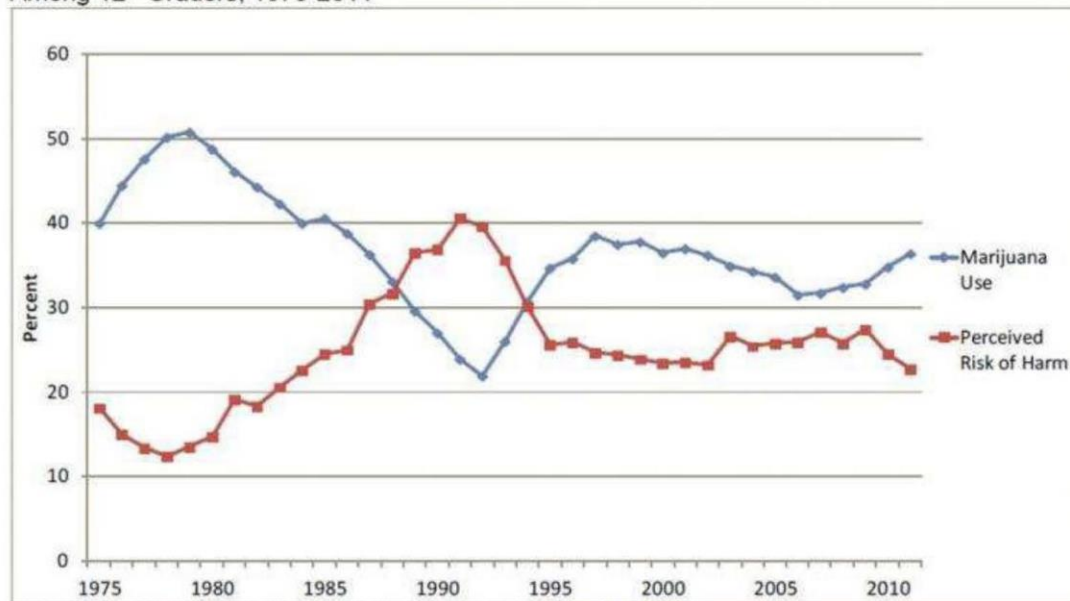
● 16

Normalization

...

Perception of Harm Down, Use Up

Figure 1. Past Year Marijuana Use and Perceived Risk of Harm of Occasional Marijuana Use Among 12th Graders, 1975-2011



^a Source: Monitoring the Future Study, www.monitoringthefuture.org.



I prefer **marijuana**
over **alcohol** because
it doesn't
make me
rowdy or
reckless.

*Why should I
be punished?*

On **November 5th**, vote
YES on Question 1

www.MarijuanalsSafer.org

Paid for by the Marijuana Policy Project
The posting of this ad does not constitute or imply an endorsement, recommendation, or favoring by METRO.



"Buddie"

This is What Today's Marijuana Looks Like...



Before Legalization: In 2006, Colorado ranked 14th for current marijuana use amongst youth.



After Legalization: Colorado now ranks 1st for current marijuana use amongst youth. (National Survey on Drug Use and Health, 2014)

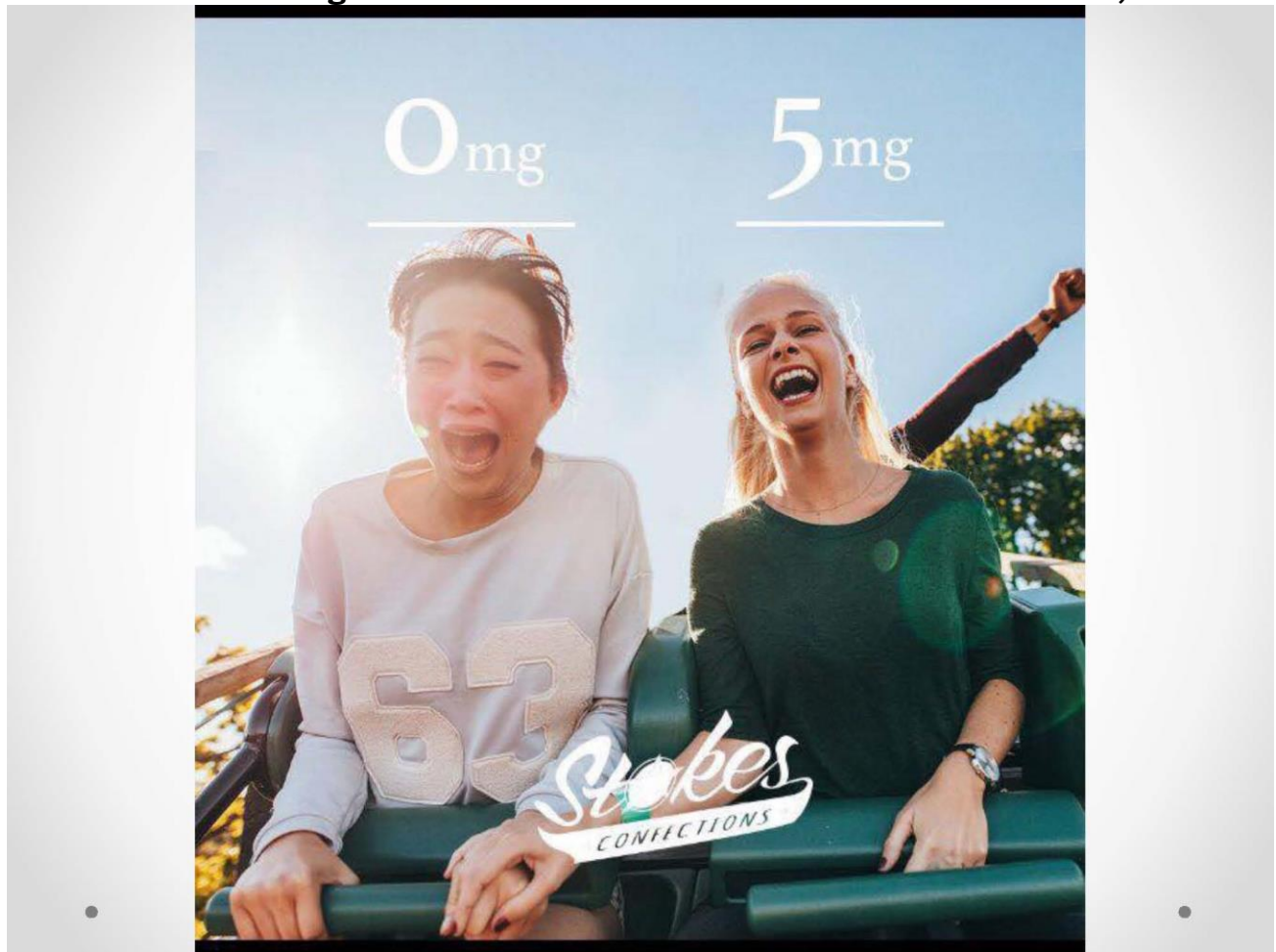


Study: Edible pot sickens more kids



A new study shows marijuana poisoning in young children has risen 150 percent in Colorado since the substance was legalized in 2014. (*JAMA Pediatrics*)

http://www.bostonherald.com/news/local_coverage/2016/07/study_edible_pot_sickens_more_kids



Big Tobacco

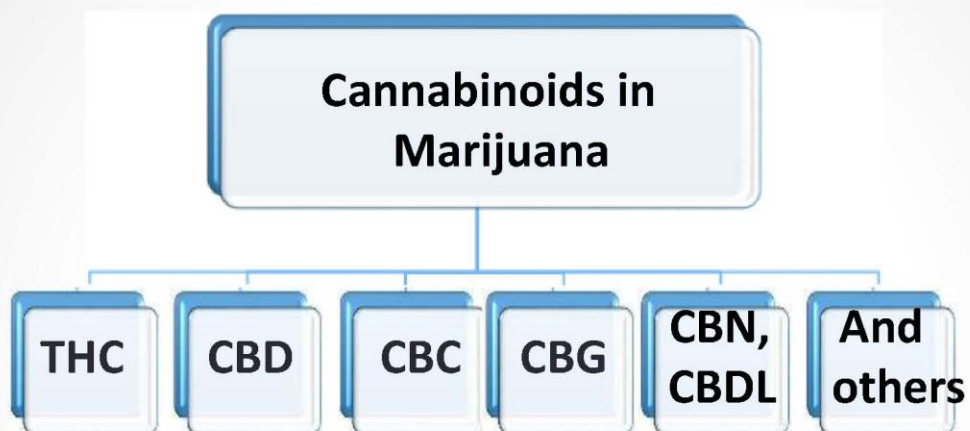


Big Marijuana



Cannabinoids and Medicine

...



Note that these compounds exist in *varying percentages*; they are *NOT equally represented* in marijuana. There are varying ratios in certain strains.

Psychoactive cannabinoids



THC



CBN



CBDL

Cannabinoids NOT known to be psychoactive

CBC

CBG

CBD

- **Medical marijuana** refers to the whole unprocessed marijuana plant or its extracts
- Not recognized or approved as medicine by FDA right now
- Two FDA-approved drugs that contain THC are used to treat nausea (chemotherapy) and wasting disease (AIDS):
- Dronabinol & Nabilone



To emphasize...

- Medical marijuana is whole, unprocessed marijuana that has NOT gone through clinical trials or scientific study for effectiveness in treating specific symptoms or medical conditions
- FDA-approved medicines (e.g. marinol, sativex, epidiolex) are using specific components of the cannabis plant, in known quantities, in scientific clinical trials to study effectiveness in treating specific symptoms or medical conditions.

MEDICINE	ACTIVE INGREDIENT	APPROVAL STATUS
Dronabinol (Marinol) & Nabilone (Cesamet)	Synthetic THC	FDA Approved to treat: <ul style="list-style-type: none">• Nausea and vomiting from chemotherapy• Stimulate appetite in AIDS-Wasting Syndrome
Sativex (mouth spray)	Equal ratio of THC-CBD	<ul style="list-style-type: none">• Approved in the UK, Canada and other European countries to treat muscle control problems caused by MS• In Phase III Clinical Trials in the US to test its safe use in treating cancer pain
Epidiolex	CBD	<ul style="list-style-type: none">• Undergoing tests in the US for the treatment of two forms of severe childhood epilepsy

This information should not be construed as medical advice.

Source: NIDA: Apr 2015. "Is Marijuana Medicine?"

Therapeutic Properties of Cannabinoids

THC (delta-9-tetrahydrocannabinol)	CBD (Cannabidiol)
Analgesic (Relieves pain)	Analgesic
Anti-inflammatory (Reduces swelling, tenderness, or pain)	Anti-inflammatory
Appetite stimulant	Anti-convulsant (Controls or prevents seizures)
Anti-spasmodic (Decreases muscle spasms, particularly in the intestines)	Immunomodulatory (Modifies the functioning of the immune system)
Anti-emetic (Treats or prevents nausea or vomiting)	Neuroprotective (Protects brain cells from degeneration)
Muscle relaxant	Non-euphoriant (Can attenuate/modulate THC's psychoactive effects)



Preclinical and clinical trials researching how cannabinoids (not whole plant) might be used to treat...

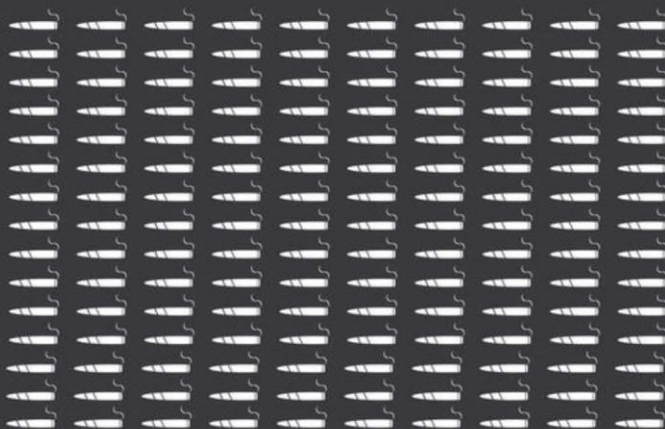
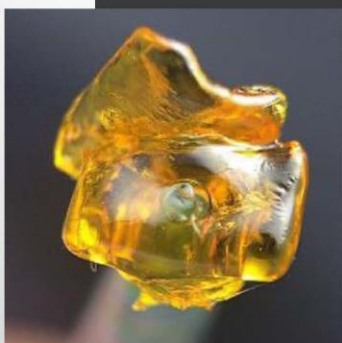
- Autoimmune diseases; HIV/AIDS, MS
- Inflammation: Rheumatoid arthritis, Crohn's
- Pain
- Seizures
- Substance Use Disorder
- Mental Disorders
- Cancer
-

Question 1

...

Personal Possession

2.5 ounces
=
150 joints



2.5 ounces of THC
concentrates

Pot Shops



Pot Clubs



Maine Marijuana Excise Tax

Pot Excise Taxes in Various States



*The 10% tax is the only tax ME would levy on marijuana - it would be levied as a special sales tax but effectively functions as an excise tax. **Oregon tax is currently 25%, but only for a limited time in 2016, and will then fall to 17-20%. ***Alaska taxes marijuana at \$50 per wholesale ounce.

- Could allow for hundreds of shops and bars in communities throughout Maine.
- No penalties for selling to minors.
- Shields pot shops from responsibility from verifying IDs presented are valid.
- No “open container” provisions like we have with alcohol
- No provisions for furnishing a place to consume like we have with alcohol

Priorities to Protect Youth

- Increase tax rate to cover social costs of legalization and to deter youth and heavy use.
- Serious consequences for retailers or adults who sell to minors.
- Statewide retail marijuana enforcement, to include underage compliance checks.
- Requirement of licensure - all retail staff receive responsible-seller training.

Priorities to Protect Youth

- Strict advertising regulations – ban TV, radio, and print advertising.
- Strict product standards for retail marijuana including:
 - Ban on edible products that are attractive to children.
 - 15% cap on THC potency for all non-medicinal marijuana products.
 - Opaque, child-proof packaging of edibles in single doses.
- Prohibit the location of retail dispensaries within 1000 feet of underage sensitive areas - private and public schools, daycares, HeadStart programs, college campuses, etc.

What do we want our youth reaching
for?



MAINERS
PROTECTING OUR YOUTH
AND COMMUNITIES

- Maine Office of Substance Abuse and Mental Health Services
www.maineosa.org
- National Institute on Drug Abuse
www.drugabuse.gov
- Smart Approaches to Marijuana
learnaboutsam.org
- Rocky Mountain High Intensity Drug Trafficking Area www.rmhidta.org

Resources

- Bangor Daily News Blog – Smart Approaches to Public Health
 - smartapproaches.bangordailynews.com
- Facebook Page
 - [Facebook.com/NotOnMyMaineStreet](https://www.facebook.com/NotOnMyMaineStreet)
- Twitter
 - @NotOnMyMaineSt
 - @ScottMGagnon

• **Blog & Social Media** •

Exhibit B – June 8, 2017

MEMORANDUM

To: Board of Selectmen
Fr: Laurie Smith, Town Manager
Re: Amendments to Sewer Use Ordinance
Dt: June 5, 2017

The Board of Selectmen have discussed changing the connection fees for the past two meetings. At your last meeting a compromise solution was presented to increase the fees from \$2,000 per unit to \$3,000 for homes with 3 bedrooms or less and \$4,000 for homes with 4 bedrooms or more. Allan Moir and I discussed the proposal with Town Counsel, Amy Tchao. The concern with the split fees are that the entire sewer ordinance and fee system is built around a single family home as a dwelling unit. All other users are multiples of this dwelling unit. If we created a 3 bedroom dwelling unit and a 4+ bedroom dwelling unit then it would have impacts throughout the ordinance. Amy's recommendation is that we maintain one single family dwelling unit, but compromise on the price adjust.

As most homes are a 3 bedroom or higher, the average for other municipalities is calculated at \$3,669. Staff was recommending a charge of \$4,000 per unit, but now are recommending \$3,500 per unit. Staff have investigated neighboring communities and found the following fees:

Sewer Connection Fees for Single Family Home		
Old Orchard	\$3,300	
Kennebunk	\$3,887	
Wells	\$1,300	1 bdrm
	\$2,000	2 bdrm
	\$3,360	3 bdrm
Ogunquit	\$5,300	
York	\$2,500	

The other consideration that came up at the last meeting, was Article V, Section 14, B. This subsection provided an exemption from the connection fee for homes built prior to 1986. Allan Moir stated that the exemption was put in place due to the Goose Rocks Beach extension that was taken on at the time. The subsection is not relevant today and we are recommending its removal. **Staff are recommending the changes to the ordinance on the following page.**

ARTICLE V - BUILDING SEWERS AND CONNECTIONS

Sec. 2. There shall be two (2) classes of building sewer permits: (a) for residential and (b) commercial service, for service to establishments producing industrial wastes. In either case, the owner or his agent shall make application on a special form furnished by the Sewer Superintendent. The permit application shall be supplemented by any plans, specifications, or other information considered pertinent in the judgment of the Superintendent. A permit and inspection fee of ~~one dollar (\$1.00)~~ two dollars (\$2.00) per gallon based on the Design Flows Tables 501.1 and 501.2 in the Maine Subsurface Wastewater Disposal Rules residential or commercial building sewer permit shall be paid to the Town at the time the application is filed.

Sec. 14. Unless exempted under subparagraph (B) below, every person seeking to, or required to, make connection with the public sewer system shall pay the charge under this section. Such charge is in addition to any other charge imposed by this Ordinance.

(A) The fee for each unit change imposed under Article XIII shall be ~~\$2,000-3,500~~. For those uses to be assigned a special charge under that Article, the connection charge shall be established by the Selectmen. Any person seeking to make connection shall fill out an appropriate form provided by the Superintendent. When the form has been approved and the fee paid, the Superintendent shall notify the Building Inspector. No building permit or occupancy permit may be issued until the fee has been paid.

~~(B) Any building or structure in existence or for which a building permit has been obtained prior to July 1, 1986, is exempted from the charge under this Section 13 for the initial building or structure connection to the Public Sewer System, except as provided in subparagraph (C) below.~~

~~(C)~~ (B) After July 1, 1986, for any change of use within a building, or expansion or alteration to a building, which results in an increase in the unit charge imposed under Article XIII, a connection charge is due for each additional unit change.

~~(D)~~ (C) All charges generated by this section shall be placed in a non-lapsing fund, to be known as the "Water Pollution Control Facility Fund," to be used for improvements to or expansion of or replacement of the existing treatment plant and facilities.