













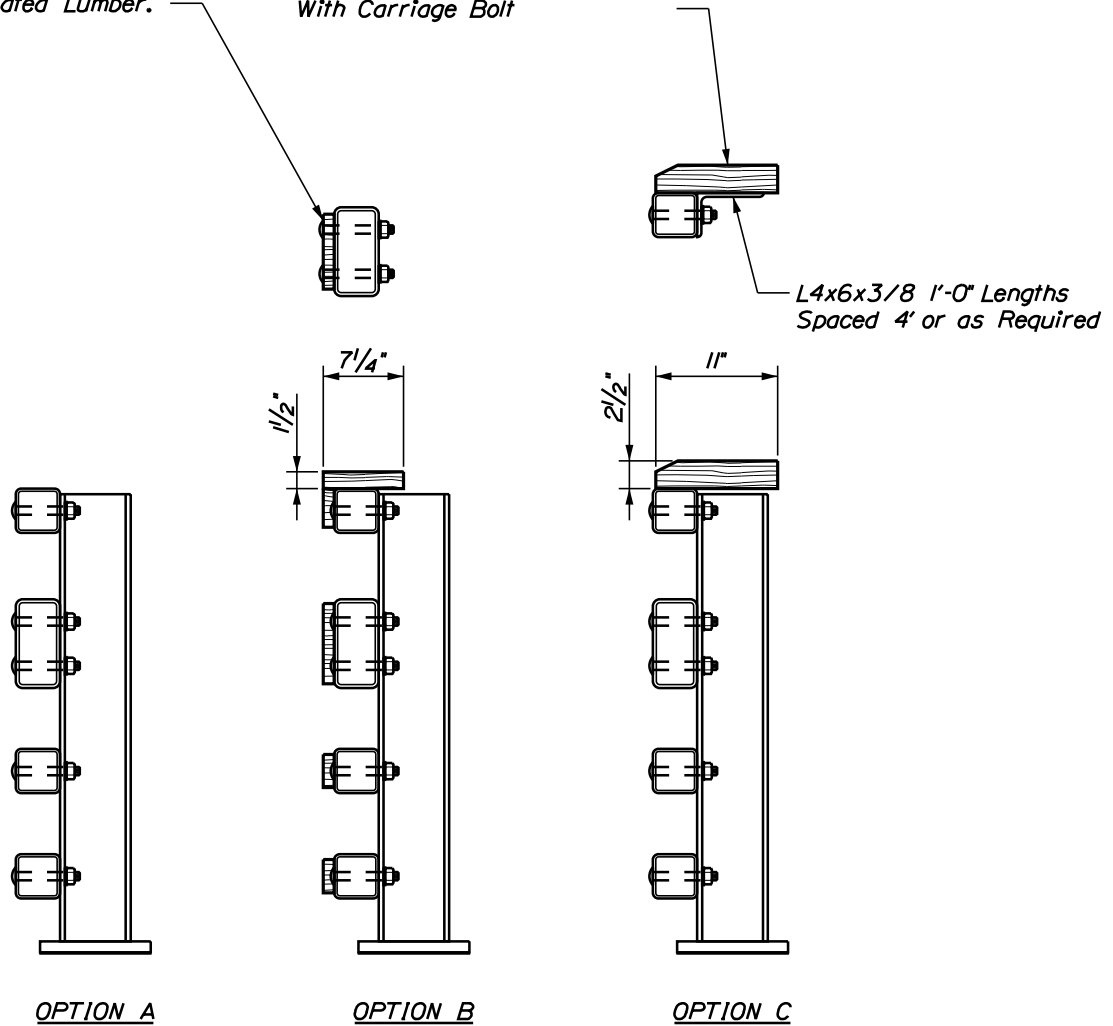




Railing Treatment Options Next to Clam Shack

*Optional Timber Rail Facing
Applied to 4 Horizontal
Rails Dressed From 1"
Pressure-Treated Lumber.*

*Attach Wood With Wood Screws
From Bottom or Through-bolt
With Carriage Bolt*



NOTES

1. Timber options:

- a. No timber*
- b. 2"x8" nominal (1 1/2"x7 1/4") lumber*
- c. 2 1/2"x11" lumber to match timber boardwalk top rail*



Coca-Cola *The Clam Shack* Coca-Cola

HIRING
APPLICATIONS AVAILABLE

The Clam Shack
SEAFOOD MARKET
FISH • LOBSTERS

Helen J. Langer
Bridge

Black Railing
Option A - no timber boards



Black Railing
Option B1 - natural timber boards



Black Railing
Option B2 - white painted timber boards



Black Railing
Option C - Natural top board
(same as timber boardwalk top rail)



Dark Tan Railing
Option A - no timber boards



Dark Tan Railing
Option B1 - natural timber boards



Dark Tan Railing
Option B2 - white painted timber boards



Dark Tan Railing
Option C - Natural top board
(same as timber boardwalk top rail)

